

## Recombinant Human EHMT2 protein, His-tagged

Cat. No. EHMT2-28H Lot. No. (See product label)

### SPECIFICATION

<b>Product Overview</b>	Recombinant Human EHMT2 protein(652-1001 aa), fused with N-terminal His tag, was expressed in E. coli.
<b>Species</b>	Human
<b>Source</b>	E.coli
<b>ProteinLength</b>	652-1001 aa
<b>Form</b>	The purified protein was Lyophilized from sterile PBS (58mM Na <sub>2</sub> HPO <sub>4</sub> , 17mM NaH <sub>2</sub> PO <sub>4</sub> , 68mM NaCl, pH7.4). 5 % trehalose and 5 % mannitol are added as protectant before lyophilization. The elution buffer contain 300mM imidazole.
<b>Storage</b>	Short-term storage: Store at 2-8°C for (1-2 weeks). Long-term storage: Aliquot and store at -20°C to -80°C for up to 3 months, reconstitution with sterile water and addition of an equal volume of glycerol. Avoid repeat freeze-thaw cycles.
<b>Purity</b>	85%, by SDS-PAGE with Coomassie Brilliant Blue staining.

### GENE INFORMATION

<b>Official Symbol</b>	<a href="#">EHMT2</a>
<b>Synonyms</b>	EHMT2; euchromatic histone-lysine N-methyltransferase 2; BAT8, C6orf30, chromosome 6 open reading frame 30 , HLA B associated transcript 8; histone-lysine

 Tel: 1-631-559-9269 1-516-512-3133

 Email: [info@creative-biomart.com](mailto:info@creative-biomart.com)  Fax: 1-631-938-8127

 45-1 Ramsey Road, Shirley, NY 11967, USA

N-methyltransferase EHMT2; Em:AF134726.3; G9A; KMT1C; NG36/G9a; protein G9a; H3-K9-HMTase 3; G9A histone methyltransferase; HLA-B associated transcript 8; HLA-B-associated transcript 8; lysine N-methyltransferase 1C; ankyrin repeat-containing protein; histone H3-K9 methyltransferase 3; histone-lysine N-methyltransferase, H3 lysine-9 specific 3; BAT8; GAT8; NG36; C6orf30; FLJ35547; DKFZp686H08213;

**Gene ID** 10919

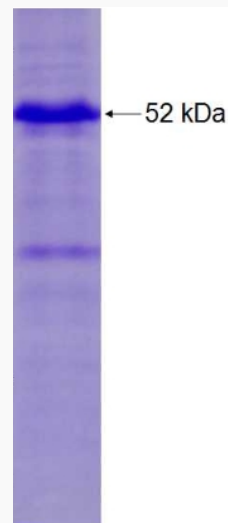
**mRNA Refseq** NM\_006709

**Protein Refseq** NP\_006700

**MIM** 604599

**UniProt ID** Q96KQ7

**SDS-PAGE**



 Tel: 1-631-559-9269 1-516-512-3133

 Email: [info@creative-biomart.com](mailto:info@creative-biomart.com)  Fax: 1-631-938-8127

 45-1 Ramsey Road, Shirley, NY 11967, USA