

Recombinant Human EI24 Protein, GST-tagged

Cat. No. EI24-3138H **Lot. No.** (See product label)

SPECIFICATION

Product Overview	Human EI24 full-length ORF (AAH02390, 1 a.a. - 340 a.a.) recombinant protein with GST-tag at N-terminal.
Species	Human
Source	Wheat Germ
Description	<p>This gene encodes a putative tumor suppressor and has higher expression in p53-expressing cells than in control cells and is an immediate-early induction target of p53-mediated apoptosis. The encoded protein may suppress cell growth by inducing apoptotic cell death through the caspase 9 and mitochondrial pathways. This gene is located on human chromosome 11q24, a region frequently altered in cancers. Alternative splicing results in multiple transcript variants. Pseudogenes of this gene have been defined on chromosomes 1, 3, 7, and 8. [provided by RefSeq, Feb 2014]</p>
Molecular Mass	63.14 kDa
AA Sequence	<p>MADSVKTFLLQDLARGIKDSIWGICTISKLDARIQQKREEQRRRRASSVLAQRRRAQSIE RKQESEPRIVSRIFQCCAWNGGVFWFSLLLFYRVFIPVLQSVTARIIGDPSLHGDVW SWLEFFLTSIFSALWVLPFLVLSKVVNAIWFQDIADLAFEVSGRKPHFPSPSVSKIIADM LFNLLLQALFLIQGMFVSLFPIHLVGLVSLLLHMSLLYSLYCFEYRWFNKGIEMHQRL SNIERNWPYYFGFGLPLAFLTAMQSSYIISGCLFSILFPLFIISANEAKTPGKAYLFQLR LFSLVVFLSNRLFHKTVYLQSALSSSTSAAEFPSPPHSPAKLKATSGH</p>
Applications	Enzyme-linked Immunoabsorbent Assay

 Tel: 1-631-559-9269 1-516-512-3133

 Email: info@creative-biomart.com  Fax: 1-631-938-8127

 45-1 Ramsey Road, Shirley, NY 11967, USA

Western Blot (Recombinant protein)
 Antibody Production
 Protein Array

Notes Best use within three months from the date of receipt of this protein.

Storage Store at -80 centigrade. Aliquot to avoid repeated freezing and thawing.

Storage Buffer 50 mM Tris-HCl, 10 mM reduced Glutathione, pH=8.0 in the elution buffer.

GENE INFORMATION

Gene Name [EI24](#) [EI24, autophagy associated transmembrane protein \[Homo sapiens \(human\) \]](#)

Official Symbol [EI24](#)

Synonyms

EI24; EI24, autophagy associated transmembrane protein; EI24, Autophagy Associated Transmembrane Protein; P53-Induced Gene 8 Protein; Etoposide Induced 2.4; PIG8; Ectopic P-Granules Autophagy Protein 4 Homolog (C. Elegans); Ectopic P-Granules Autophagy Protein 4 Homolog; Etoposide-Induced Protein 2.4 Homolog; Tumor Protein P53 Inducible Protein 8; Etoposide Induced 2.4 MRNA; TP53I8; EPG4; etoposide-induced protein 2.4 homolog; ectopic P-granules autophagy protein 4 homolog; etoposide induced 2.4; p53-induced gene 8 protein; tumor protein p53 inducible protein 8

Gene ID [9538](#)

mRNA Refseq [NM_001290135](#)

Protein Refseq [NP_001277064](#)

 Tel: 1-631-559-9269 1-516-512-3133

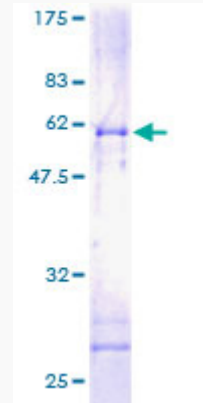
 Email: info@creative-biomart.com  Fax: 1-631-938-8127

 45-1 Ramsey Road, Shirley, NY 11967, USA

MIM 605170

UniProt ID O14681

**Quality Control
Testing**



12.5% SDS-PAGE Stained with Coomassie Blue.

 Tel: 1-631-559-9269 1-516-512-3133

 Email: info@creative-biomart.com  Fax: 1-631-938-8127

 45-1 Ramsey Road, Shirley, NY 11967, USA