

Recombinant Human EIF1B Protein (Met1-Phe113), N-His tagged

Cat. No. EIF1B-1677H Lot. No. (See product label)

SPECIFICATION

Product Overview	Recombinant human EIF1B (Met1-Phe113) fused with N-terminal His tag was expressed in E. coli.
Species	Human
Source	E.coli
ProteinLength	Met1-Phe113
Form	Lyophilized powder/frozen liquid
Molecular Mass	12.43 kDa
Purity	>90% as determined by SDS-PAGE
Notes	For research use only.
Storage	Use a manual defrost freezer and avoid repeated freeze thaw cycles. Store at 2 to 8 centigrade for one week. Store at -20 to -80 centigrade for twelve months from the date of receipt.
Storage Buffer	Supplied as solution form in PBS or lyophilized from PBS.
Reconstitution	Reconstitute in sterile water for a stock solution.

 Tel: 1-631-559-9269 1-516-512-3133

 Email: info@creative-biomart.com  Fax: 1-631-938-8127

 45-1 Ramsey Road, Shirley, NY 11967, USA

Shipping They are shipped out with dry ice/blue ice unless customers require otherwise.

GENE INFORMATION

Gene Name EIF1B eukaryotic translation initiation factor 1B [Homo sapiens (human)]

Official Symbol EIF1B

Synonyms EIF1B; eukaryotic translation initiation factor 1B; eukaryotic translation initiation factor 1b; GC20; translation factor sui1 homolog; protein translation factor SUI1 homolog GC20;

Gene ID 10289

mRNA Refseq NM_005875

Protein Refseq NP_005866

UniProt ID O60739

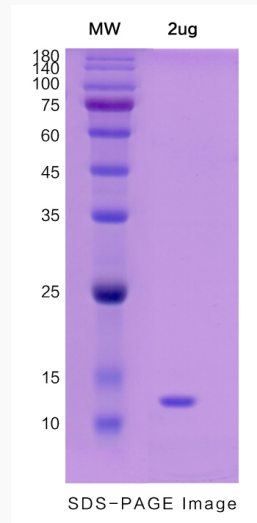
 Tel: 1-631-559-9269 1-516-512-3133

 Email: info@creative-biomart.com  Fax: 1-631-938-8127

 45-1 Ramsey Road, Shirley, NY 11967, USA



SDS-PAGE



Tel: 1-631-559-9269 1-516-512-3133

Email: info@creative-biomart.com Fax: 1-631-938-8127

45-1 Ramsey Road, Shirley, NY 11967, USA