

Recombinant Human EIF1B Protein, Myc/DDK-tagged, C13 and N15-labeled

Cat. No. EIF1B-3035H **Lot. No.** (See product label)

SPECIFICATION

Product Overview	EIF1B MS Standard C13 and N15-labeled recombinant protein (NP_005866) with a C-terminal MYC/DDK tag, was expressed in HEK293 cells.
Species	Human
Source	HEK293
Description	Probably involved in translation.
Molecular Mass	12.8 kDa
AA Sequence	MSTIQNLQSFDPFADATKGDDLLPAGTEDYIHIRIQQRNGRKTLLTTVQGIADDDYDKKK LVKAFKKKFACNGTVIEHPEYGEVIQLQGDQRKNICQFLLEVGVKKEEQLKVHGFTRT RPLEQKLISEEDLAANDILDYKDDDDKV
Purity	> 80% as determined by SDS-PAGE and Coomassie blue staining
Stability	Stable for 3 months from receipt of products under proper storage and handling conditions.
Storage	Store at -80 centigrade. Avoid repeated freeze-thaw cycles.
Concentration	50 µg/mL as determined by BCA

 Tel: 1-631-559-9269 1-516-512-3133

 Email: info@creative-biomart.com  Fax: 1-631-938-8127

 45-1 Ramsey Road, Shirley, NY 11967, USA

Storage Buffer 100 mM glycine, 25 mM Tris-HCl, pH 7.3.

GENE INFORMATION

Gene Name EIF1B eukaryotic translation initiation factor 1B [Homo sapiens (human)]

Official Symbol EIF1B

Synonyms EIF1B; eukaryotic translation initiation factor 1B; eukaryotic translation initiation factor 1b; GC20; translation factor sui1 homolog; protein translation factor SUI1 homolog GC20;

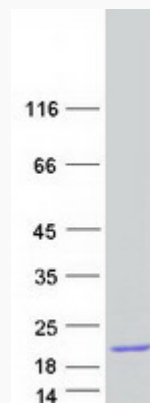
Gene ID 10289

mRNA Refseq NM_005875

Protein Refseq NP_005866

UniProt ID O60739

SDS-PAGE



 Tel: 1-631-559-9269 1-516-512-3133

 Email: info@creative-biomart.com  Fax: 1-631-938-8127

 45-1 Ramsey Road, Shirley, NY 11967, USA