

Recombinant Human EIF1B protein

Cat. No. EIF1B-5654H Lot. No. (See product label)

SPECIFICATION

Product Overview	Recombinant Human EIF1Bprotein(O60739)(113aa) was expressed in E. coli.
Species	Human
Source	E.coli
ProteinLength	113aa
Tag	Non
Form	20mM Tris.Cl, 50mM NaCl, 50% Glycerol, pH8.0.
Molecular Mass	12.7kDa
Storage	Store at -80°C and avoid repeated freeze-thaw cycles.
Reconstitution	It is recommended that sterile water be added to the vial to prepare a stock solution of 0.2 ug/ul. Centrifuge the vial at 4°C before opening to recover the entire contents.

GENE INFORMATION

Gene Name	EIF1B eukaryotic translation initiation factor 1B [Homo sapiens]
Official Symbol	EIF1B

 Tel: 1-631-559-9269 1-516-512-3133

 Email: info@creative-biomart.com  Fax: 1-631-938-8127

 45-1 Ramsey Road, Shirley, NY 11967, USA

Synonyms EIF1B; eukaryotic translation initiation factor 1B; eukaryotic translation initiation factor 1b; GC20; translation factor sui1 homolog; protein translation factor SUI1 homolog GC20;

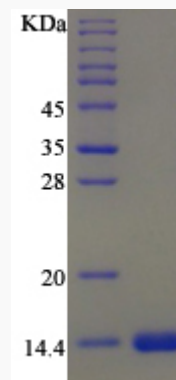
Gene ID 10289

mRNA Refseq NM_005875

Protein Refseq NP_005866

UniProt ID O60739

SDS-PAGE



 Tel: 1-631-559-9269 1-516-512-3133

 Email: info@creative-biomart.com  Fax: 1-631-938-8127

 45-1 Ramsey Road, Shirley, NY 11967, USA