

Recombinant Human EIF2A Protein, GST-tagged

Cat. No. EIF2A-3145H Lot. No. (See product label)

SPECIFICATION

Product Overview	Human EIF2A full-length ORF (AAH11885.1, 1 a.a. - 585 a.a.) recombinant protein with GST-tag at N-terminal.
Species	Human
Source	Wheat Germ
Description	<p>This gene encodes a eukaryotic translation initiation factor that catalyzes the formation of puromycin-sensitive 80 S preinitiation complexes and the poly(U)-directed synthesis of polyphenylalanine at low concentrations of Mg²⁺. This gene should not be confused with eIF2-alpha (EIF2S1, Gene ID: 1965), the alpha subunit of the eIF2 translation initiation complex. Although both of these proteins function in binding initiator tRNA to the 40 S ribosomal subunit, the encoded protein does so in a codon-dependent manner, whereas eIF2 complex requires GTP. Alternative splicing of this gene results in multiple transcript variants encoding different isoforms. [provided by RefSeq, Jan 2016]</p>
Molecular Mass	91.4 kDa
AA Sequence	<p>MAPSTPLLTVRGSEGLYMVNGPPHFTESTVFPRESGKNCKVCIFSKDGLTFAWGNG EKVNIISVTNKGLLSFDLLKAVCLEFSPKNTVLATWQPYYTTSKDGTAGIPNLQLYDV KTGTCLKSFIQKKMQNWCPSEDETLCAENVNNEVHFFENNNFNTIANKLHLQKI NDFVLSPGPQPYKVAVYVPGSKGAPSFVRLYQYPNFAGPHAALANKSFFKADKVTM LWNKKATAVLVIASDVKDVTGASYYGEQTLHYIATNGESAVVQLPKNGPIYDVVWNS</p>

 Tel: 1-631-559-9269 1-516-512-3133

 Email: info@creative-biomart.com  Fax: 1-631-938-8127

 45-1 Ramsey Road, Shirley, NY 11967, USA

SSTEFCAVYGFMPAKATIFNLKCDPVDFDGTGPRNAAYYSPHGHILVLAGFGNLRGQ
 MEVWDVKNYKLISKPVASDSTYFAWCPDGEHILTATCAPRLRVNNGYKIWHYTGSI
 HKYDVPSNAELWQVSWQPFLDGIFPAKTITYQAVPSEVPNEEPKVATAYRPPALRN
 KPITNSKLHEEPPQNMKPQSGNDKPLSKTALKNQRKHEAKKAAKQEARSDKSPDL
 APTPAPQSTPRNTVSQSIGDPEIDKKIKNLKKKLAIEQLKEQAATGKQLEKNQLEKI
 QKETALLQELEDLKLGI

Applications	Enzyme-linked Immunoabsorbent Assay Western Blot (Recombinant protein) Antibody Production Protein Array
Notes	Best use within three months from the date of receipt of this protein.
Storage	Store at -80 centigrade. Aliquot to avoid repeated freezing and thawing.
Storage Buffer	50 mM Tris-HCl, 10 mM reduced Glutathione, pH=8.0 in the elution buffer.

GENE INFORMATION

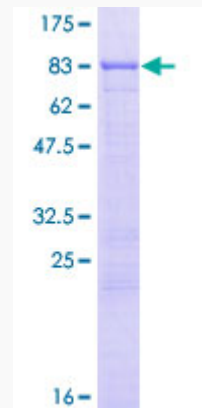
Gene Name	EIF2A eukaryotic translation initiation factor 2A, 65kDa [Homo sapiens]
Official Symbol	EIF2A
Synonyms	EIF2A; eukaryotic translation initiation factor 2A, 65kDa; eukaryotic translation initiation factor 2A; EIF 2A; 65 kDa eukaryotic translation initiation factor 2A; CDA02; EIF-2A; MST089; MSTP004; MSTP089;
Gene ID	83939
mRNA Refseq	NM_032025

Protein Refseq NP_114414

MIM 609234

UniProt ID Q9BY44

**Quality Control
Testing**



12.5% SDS-PAGE Stained with Coomassie Blue.

 Tel: 1-631-559-9269 1-516-512-3133

 Email: info@creative-biomart.com  Fax: 1-631-938-8127

 45-1 Ramsey Road, Shirley, NY 11967, USA