

Recombinant Full Length Human EIF2A Protein, C-Flag-tagged

Cat. No. EIF2A-58HFL Lot. No. (See product label)

SPECIFICATION

Product Overview	Recombinant Full Length Human EIF2A Protein, fused to Flag-tag at C-terminus, was expressed in Mammalian cells.
Species	Human
Source	Mammalian Cells
Description	This gene encodes a eukaryotic translation initiation factor that catalyzes the formation of puromycin-sensitive 80 S preinitiation complexes and the poly(U)-directed synthesis of polyphenylalanine at low concentrations of Mg ²⁺ . This gene should not be confused with eIF2-alpha (EIF2S1, Gene ID: 1965), the alpha subunit of the eIF2 translation initiation complex. Although both of these proteins function in binding initiator tRNA to the 40 S ribosomal subunit, the encoded protein does so in a codon-dependent manner, whereas eIF2 complex requires GTP. Alternative splicing of this gene results in multiple transcript variants encoding different isoforms.
Form	25 mM Tris HCl, pH 7.3, 100 mM glycine, 10% glycerol.
Molecular Mass	64.8 kDa
AA Sequence	MAPSTPLLTVRGSEGLYMVNGPPHFTESTVFPRESGKNCKVCIFSKDGTLFAWGNG EKVNIISVTNKGLL HFDLLKAVCLEFSPKNTVLATWQPYYTTSKDG TAGIPNLQLYDV KTGTCLKSFIQKKMQNWCPWSEDET LCARNVNNEVHFFENNNFNNTIANKLHLQKI NDFVLSPGPQPYKVAVYVPGSKGAPSFVRLYQYPNFAGPH AALANKSFFKADKVT MLWNKKATAVLVIASDVKDGTGASYYGEQTLHYIATNGESAVVQLPKNGPIYDVV W

 Tel: 1-631-559-9269 1-516-512-3133

 Email: info@creative-biomart.com  Fax: 1-631-938-8127

 45-1 Ramsey Road, Shirley, NY 11967, USA

NSSSTEFCAVYGFMPAKATIFNLKCDPVDFDGTGPRNAAYYSPHGHILVLAGFGNLR
 GQMEVWDVKNYK LISKPVASDSTYFAWC PDGEHILTATCAPRLRVNNGYKIWHYT
 GSILHKYDVPSNAELWQVSWQPFLDGI FPAKTITYQAVPSEVPNEEPKVATAYRPPA
 LRNKPITNSKLHEEPPQNMKPKQSGNDKPLSKTALKNQRK HEAKKAAKQEARSDK
 SPDLAPTPAPQSTPRNTVVSQSIGDPEIDKKIKNLKKLKAIEQLKEQAATGKQL
 EKNQLEKIQKETALLQELEDLKLGITRTRPLEQKLISEEDLAANDILDYKDDDDKV

Purity	> 80% as determined by SDS-PAGE and Coomassie blue staining.
Stability	Stable for 12 months from the date of receipt of the product under proper storage and handling conditions. Avoid repeated freeze-thaw cycles.
Storage	Store at -80 centigrade.
Concentration	>50 ug/mL as determined by microplate BCA method.
Preparation	Recombinant protein was captured through anti-DDK affinity column followed by conventional chromatography steps.
Full Length	Full L.

GENE INFORMATION

Gene Name	EIF2A eukaryotic translation initiation factor 2A [Homo sapiens (human)]
Official Symbol	EIF2A
Synonyms	CDA02; EIF-2A; MST089; MSTP004; MSTP089
Gene ID	83939

 Tel: 1-631-559-9269 1-516-512-3133

 Email: info@creative-biomart.com  Fax: 1-631-938-8127

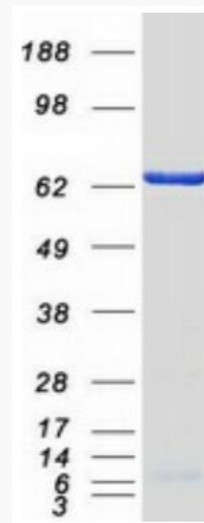
 45-1 Ramsey Road, Shirley, NY 11967, USA

mRNA Refseq [NM_032025.5](#)

Protein Refseq [NP_114414.2](#)

MIM [609234](#)

UniProt ID [Q9BY44](#)



Coomassie blue staining of purified EIF2A protein.

 Tel: 1-631-559-9269 1-516-512-3133

 Email: info@creative-biomart.com  Fax: 1-631-938-8127

 45-1 Ramsey Road, Shirley, NY 11967, USA