

Recombinant Full Length Human EIF2AK2 Protein, C-Flag-tagged

Cat. No. EIF2AK2-153HFL **Lot. No.** (See product label)

SPECIFICATION

Product Overview	Recombinant Full Length Human EIF2AK2 Protein, fused to Flag-tag at C-terminus, was expressed in Mammalian cells.
Species	Human
Source	Mammalian Cells
Description	The protein encoded by this gene is a serine/threonine protein kinase that is activated by autophosphorylation after binding to dsRNA. The activated form of the encoded protein can phosphorylate translation initiation factor EIF2S1, which in turn inhibits protein synthesis. This protein is also activated by manganese ions and heparin. Three transcript variants encoding two different isoforms have been found for this gene.
Form	25 mM Tris HCl, pH 7.3, 100 mM glycine, 10% glycerol.
Molecular Mass	61.9 kDa
AA Sequence	MAGDLSAGFFMEELNTYRQKQGVLKYQELPNSGPPHRRFTFQVIIDGREFPEGE GRSKKEAKNAAAKL AVEILNKEKKAVSPLLLLTTNSSEGLSMGNYIGLINRIAQKKRL TVNYEQCASGVHGPEGFHYKCKMGQK EYSIGTGSTKQEAKQLAAKLAYLQILSEET SVKSDYLSSGSFATTCESQSNSLVTSTLASESSSEGDFA DTSEINSNSDSLNSSSL LMNGLRNNQRKAKRSLAPRFDLPDMKETYVVDKRFGMDFKEIELIGSGGFGQ VFK AKHRIDGKTYVIKRVKYNNEKAEREVKALAKLDHVNIVHYNGCWDGDFDYDPETSDD

 Tel: 1-631-559-9269 1-516-512-3133

 Email: info@creative-biomart.com  Fax: 1-631-938-8127

 45-1 Ramsey Road, Shirley, NY 11967, USA

SLESSDYDPEN SKNSSRSKTKCLFIQMEFCDKGTLEQWIEKRRGEKLDKVLALELFE
 QITKGVVDYIHSKCLIHRDLKPSNI FLVDTKQVKIGDFGLVTSCLKNDGKRTRRSKGTLY
 MSPEQISSQDYGKEVDLYALGLILAELLHVCDTAFE
 TSKFFTDLRDGIISDIFDKKEKTLLQKLLSKKPEDRPNTSEILRTLTVWKKSPKNERH
 TCTRTRPLEQKLISEEDLAANDILDYKDDDDKV

Purity > 80% as determined by SDS-PAGE and Coomassie blue staining.

Stability Stable for 12 months from the date of receipt of the product under proper storage and handling conditions. Avoid repeated freeze-thaw cycles.

Storage Store at -80 centigrade.

Concentration >50 ug/mL as determined by microplate BCA method.

Preparation Recombinant protein was captured through anti-DDK affinity column followed by conventional chromatography steps.

Protein Families Druggable Genome, Protein Kinase, Transcription Factors

Full Length Full L.

GENE INFORMATION

Gene Name EIF2AK2 eukaryotic translation initiation factor 2 alpha kinase 2 [Homo sapiens (human)]

Official Symbol EIF2AK2

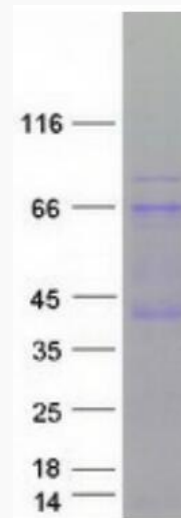
Synonyms PKR; PRKR; DYT33; LEUDEN; EIF2AK1; PPP1R83

 Tel: 1-631-559-9269 1-516-512-3133

 Email: info@creative-biomart.com  Fax: 1-631-938-8127

 45-1 Ramsey Road, Shirley, NY 11967, USA

Gene ID	5610
mRNA Refseq	NM_001135651.3
Protein Refseq	NP_001129123.1
MIM	176871
UniProt ID	P19525



Coomassie blue staining of purified EIF2AK2 protein.

Tel: 1-631-559-9269 1-516-512-3133

Email: info@creative-biomart.com Fax: 1-631-938-8127

45-1 Ramsey Road, Shirley, NY 11967, USA