

Active Recombinant Human EIF2AK2 Protein, GST-tagged

Cat. No. EIF2AK2-3148H Lot. No. (See product label)

SPECIFICATION

Product Overview	Human EIF2AK2 (NP_002750.1, 252 a.a. - 551 a.a.) partial recombinant protein with GST tag expressed in baculovirus infected Sf21 cells.
Species	Human
Source	Insect Cells
ProteinLength	252-551 a.a.
Description	The protein encoded by this gene is a serine/threonine protein kinase that is activated by autophosphorylation after binding to dsRNA. The activated form of the encoded protein can phosphorylate translation initiation factor EIF2S1, which in turn inhibits protein synthesis. This protein is also activated by manganese ions and heparin. Three transcript variants encoding two different isoforms have been found for this gene. [provided by RefSeq, Oct 2011]
Form	Liquid
Bio-activity	The activity was determined by IMAP TM assay. The enzyme was incubated with fluorescein labeled peptide and phosphorylation was detected by IMAP TM technology (fluorescence polarization). Substrate: SRPKtide. ATP: 100 μM.
Molecular Mass	62 kDa

 Tel: 1-631-559-9269 1-516-512-3133

 Email: info@creative-biomart.com  Fax: 1-631-938-8127

 45-1 Ramsey Road, Shirley, NY 11967, USA

Purity	61 % by SDS-PAGE/CBB staining
Applications	Functional Study SDS-PAGE
Storage	Store at -80 centigrade. Aliquot to avoid repeated freezing and thawing.
Storage Buffer	In 50 mM Tris-HCl, 150 mM NaCl, pH 7.5 (0.05% Brij35, 1 mM DTT, 10% glycerol)

GENE INFORMATION

Gene Name	EIF2AK2 eukaryotic translation initiation factor 2-alpha kinase 2 [Homo sapiens]
Official Symbol	EIF2AK2
Synonyms	EIF2AK2; eukaryotic translation initiation factor 2-alpha kinase 2; PRKR, protein kinase, interferon inducible double stranded RNA dependent; interferon-induced, double-stranded RNA-activated protein kinase; EIF2AK1; PKR; p68 kinase; eIF-2A protein kinase 2; P1/eIF-2A protein kinase; tyrosine-protein kinase EIF2AK2; interferon-inducible eIF2alpha kinase; double stranded RNA activated protein kinase; protein kinase, interferon-inducible double stranded RNA dependent; PRKR; MGC126524;
Gene ID	5610
mRNA Refseq	NM_001135651
Protein Refseq	NP_001129123
MIM	176871

 Tel: 1-631-559-9269 1-516-512-3133

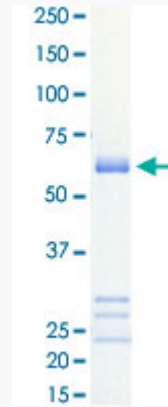
 Email: info@creative-biomart.com  Fax: 1-631-938-8127

 45-1 Ramsey Road, Shirley, NY 11967, USA

UniProt ID

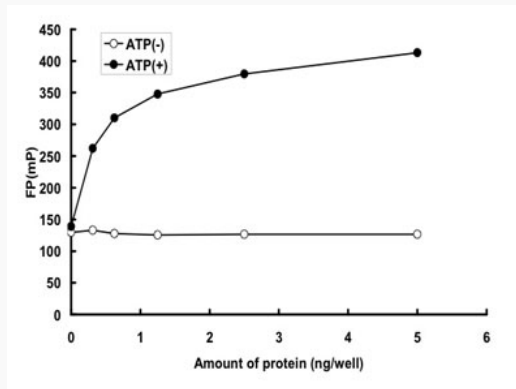
P19525

Quality Control
Testing



Loading 1 μ g protein in SDS-PAGE

Result of activity
analysis



Tel: 1-631-559-9269 1-516-512-3133

Email: info@creative-biomart.com Fax: 1-631-938-8127

45-1 Ramsey Road, Shirley, NY 11967, USA