

Recombinant Human eukaryotic translation initiation factor 2-alpha kinase 3 Protein, His tagged

Cat. No. EIF2AK3-013H Lot. No. (See product label)

SPECIFICATION

Product Overview	Recombinant human ZO1 protein (Q9NZJ5) (Glu 95-Glu 420) with a His tag at the C-terminus was expressed in E. coli.
Species	Human
Source	E.coli
ProteinLength	95-420aa
Description	The protein encoded by this gene phosphorylates the alpha subunit of eukaryotic translation-initiation factor 2, leading to its inactivation, and thus to a rapid reduction of translational initiation and repression of global protein synthesis. This protein is thought to modulate mitochondrial function. It is a type I membrane protein located in the endoplasmic reticulum (ER), where it is induced by ER stress caused by malformed proteins. Mutations in this gene are associated with Wolcott-Rallison syndrome.
Tag	C-His
Molecular Mass	38.2 kDa
Endotoxin	Less than 1.0 EU/μg by the LAL method.
Purity	>95% as determined by SDS-PAGE.

 Tel: 1-631-559-9269 1-516-512-3133

 Email: info@creative-biomart.com  Fax: 1-631-938-8127

 45-1 Ramsey Road, Shirley, NY 11967, USA

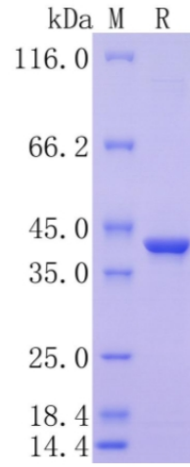
Storage	Please avoid repeated freeze-thaw cycles. Samples are stable for up to twelve months from date of receipt at -20 to -80 centigrade. It is recommended that aliquot the reconstituted solution to minimize freeze-thaw cycles.
Storage Buffer	Lyophilized from a 0.2 µm filtered solution of PBS, pH7.4, 5% Trehalose, 5% mannitol.
Reconstitution	Reconstitute at 250 µg/mL in sterile water.
GENE INFORMATION	
Gene Name	EIF2AK3 eukaryotic translation initiation factor 2-alpha kinase 3 [Homo sapiens (human)]
Official Symbol	EIF2AK3
Synonyms	EIF2AK3; eukaryotic translation initiation factor 2-alpha kinase 3; PEK; PERK; hsPEK; pancreatic EIF2-alpha kinase; PRKR-like endoplasmic reticulum kinase; eukaryotic translation initiation factor 2 alpha kinase 3; WRS; DKFZp781H1925;
Gene ID	9451
mRNA Refseq	NM_004836
Protein Refseq	NP_004827
MIM	604032
UniProt ID	Q9NZJ5

 Tel: 1-631-559-9269 1-516-512-3133

 Email: info@creative-biomart.com  Fax: 1-631-938-8127

 45-1 Ramsey Road, Shirley, NY 11967, USA

**Protein on SDS-
PAGE under
reducing (R)
condition.**



 Tel: 1-631-559-9269 1-516-512-3133

 Email: info@creative-biomart.com  Fax: 1-631-938-8127

 45-1 Ramsey Road, Shirley, NY 11967, USA