

Active Recombinant Human EIF2AK3 Protein, GST-tagged

Cat. No. EIF2AK3-3150H Lot. No. (See product label)

SPECIFICATION

Product Overview	Human EIF2AK3 (NP_004827.3, 536 a.a. - 1116 a.a.) partial recombinant protein with GST tag expressed in Escherichia coli.
Species	Human
Source	E.coli
ProteinLength	536-1116 a.a.
Description	<p>The protein encoded by this gene phosphorylates the alpha subunit of eukaryotic translation-initiation factor 2, leading to its inactivation, and thus to a rapid reduction of translational initiation and repression of global protein synthesis. This protein is thought to modulate mitochondrial function. It is a type I membrane protein located in the endoplasmic reticulum (ER), where it is induced by ER stress caused by malformed proteins. Mutations in this gene are associated with Wolcott-Rallison syndrome. [provided by RefSeq, Sep 2015]</p>
Form	Liquid
Bio-activity	<p>The activity was determined by IMAPTM assay. The enzyme was incubated with fluorescein labeled peptide and phosphorylation was detected by IMAPTM technology (fluorescence polarization).</p> <p>Substrate: SRPKtide.</p> <p>ATP: 100 µM.</p>

 Tel: 1-631-559-9269 1-516-512-3133

 Email: info@creative-biomart.com  Fax: 1-631-938-8127

 45-1 Ramsey Road, Shirley, NY 11967, USA

Molecular Mass	94 kDa
Purity	51 % by SDS-PAGE/CBB staining
Applications	Functional Study SDS-PAGE
Storage	Store at -80 centigrade. Aliquot to avoid repeated freezing and thawing.
Storage Buffer	In 50 mM Tris-HCl, 150 mM NaCl, pH 7.5 (0.05% Brij35, 1 mM DTT, 10% glycerol)

GENE INFORMATION

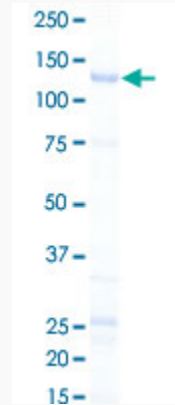
Gene Name	EIF2AK3 eukaryotic translation initiation factor 2-alpha kinase 3 [Homo sapiens]
Official Symbol	EIF2AK3
Synonyms	EIF2AK3; eukaryotic translation initiation factor 2-alpha kinase 3; PEK; PERK; hsPEK; pancreatic EIF2-alpha kinase; PRKR-like endoplasmic reticulum kinase; eukaryotic translation initiation factor 2 alpha kinase 3; WRS; DKFZp781H1925;
Gene ID	9451
mRNA Refseq	NM_004836
Protein Refseq	NP_004827
MIM	604032
UniProt ID	Q9NZJ5

 Tel: 1-631-559-9269 1-516-512-3133

 Email: info@creative-biomart.com  Fax: 1-631-938-8127

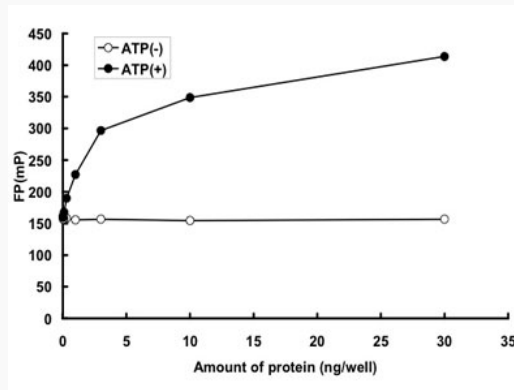
 45-1 Ramsey Road, Shirley, NY 11967, USA

**Quality Control
Testing**



Loading 1 μ g protein in SDS-PAGE

**Result of activity
analysis**



 Tel: 1-631-559-9269 1-516-512-3133

 Email: info@creative-biomart.com  Fax: 1-631-938-8127

 45-1 Ramsey Road, Shirley, NY 11967, USA