

Recombinant Human EIF2AK4 Protein, GST-tagged

Cat. No. EIF2AK4-3153H **Lot. No.** (See product label)

SPECIFICATION

Product Overview	Human EIF2AK4 partial ORF (NP_001013725, 1401 a.a. - 1500 a.a.) recombinant protein with GST-tag at N-terminal.
Species	Human
Source	Wheat Germ
Description	This gene encodes a member of a family of kinases that phosphorylate the alpha subunit of eukaryotic translation initiation factor-2 (EIF2), resulting in the downregulation of protein synthesis. The encoded protein responds to amino acid deprivation by binding uncharged transfer RNAs. It may also be activated by glucose deprivation and viral infection. Mutations in this gene have been found in individuals suffering from autosomal recessive pulmonary venoocclusive-disease-2. [provided by RefSeq, Mar 2014]
Molecular Mass	36.74 kDa
AA Sequence	VVSVGQMSMSRAINLTQKLWTAGITAEIMYDWSQSQEELQEYCRHHEITYVALVSD KEGSHVKVKSFEKERQTEKRVLETTELVDHVLQKLRTKVTDERNG
Applications	Enzyme-linked Immunoabsorbent Assay Western Blot (Recombinant protein) Antibody Production Protein Array

 Tel: 1-631-559-9269 1-516-512-3133

 Email: info@creative-biomart.com  Fax: 1-631-938-8127

 45-1 Ramsey Road, Shirley, NY 11967, USA

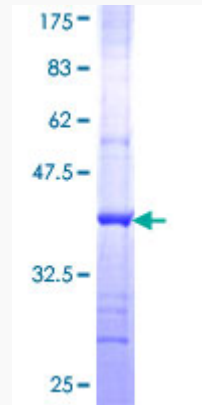
Notes	Best use within three months from the date of receipt of this protein.
Storage	Store at -80 centigrade. Aliquot to avoid repeated freezing and thawing.
Storage Buffer	50 mM Tris-HCl, 10 mM reduced Glutathione, pH=8.0 in the elution buffer.
GENE INFORMATION	
Gene Name	EIF2AK4 eukaryotic translation initiation factor 2 alpha kinase 4 [Homo sapiens]
Official Symbol	EIF2AK4
Synonyms	EIF2AK4; eukaryotic translation initiation factor 2 alpha kinase 4; eukaryotic translation initiation factor 2-alpha kinase 4; GCN2; KIAA1338; GCN2-like protein; GCN2 eIF2alpha kinase;
Gene ID	440275
mRNA Refseq	NM_001013703
Protein Refseq	NP_001013725
MIM	609280
UniProt ID	Q9P2K8

 Tel: 1-631-559-9269 1-516-512-3133

 Email: info@creative-biomart.com  Fax: 1-631-938-8127

 45-1 Ramsey Road, Shirley, NY 11967, USA

**Quality Control
Testing**



12.5% SDS-PAGE Stained with Coomassie Blue.

 Tel: 1-631-559-9269 1-516-512-3133

 Email: info@creative-biomart.com  Fax: 1-631-938-8127

 45-1 Ramsey Road, Shirley, NY 11967, USA