

Recombinant Human EIF2B2 Protein, Myc/DDK-tagged, C13 and N15-labeled

Cat. No. EIF2B2-2045H Lot. No. (See product label)

SPECIFICATION

Product Overview	EIF2B2 MS Standard C13 and N15-labeled recombinant protein (NP_055054) with a C-terminal MYC/DDK tag, was expressed in HEK293 cells.
Species	Human
Source	HEK293
Description	This gene encodes the beta subunit of eukaryotic initiation factor-2B (EIF2B). EIF2B is involved in protein synthesis and exchanges GDP and GTP for its activation and deactivation.
Molecular Mass	39 kDa
AA Sequence	MPGSAAKGSELSESERIESFVETLKRGGGPRSSSEEMARETLGLLRQIITDHRWSNAGEL MELIRREGRRMTAAQPSETTVGNMVRRLVKIIREEYGR LHGRTDESDQQESLHKLLT SGGLNEDFSFHYAQLQSNIIIEAINELLVELEGT MENIAAQALEHIHSNEVIMTIGFSRTV EAFLKEAARKRKFHVIVAECAPFCQGHEMAVNLSKAGIETTVMTDAAIFAVMSRVNK VIIGTKTILANGALRAVTGTHTLALAAKHHSTPLIVCAPMFKLSPQFPNEEDSFHKFVA PEEVLPFTEGDILEKVSVHCPVFDYVPPELITL FISNIGGNAPSIIYRLMSELYHPDDH VLTRTRPLEQKLISEEDLAANDILDYKDDDDKV
Purity	> 80% as determined by SDS-PAGE and Coomassie blue staining
Stability	Stable for 3 months from receipt of products under proper storage and handling

 Tel: 1-631-559-9269 1-516-512-3133

 Email: info@creative-biomart.com  Fax: 1-631-938-8127

 45-1 Ramsey Road, Shirley, NY 11967, USA

conditions.

Storage Store at -80 centigrade. Avoid repeated freeze-thaw cycles.

Concentration 50 µg/mL as determined by BCA

Storage Buffer 100 mM glycine, 25 mM Tris-HCl, pH 7.3.

GENE INFORMATION

Gene Name [EIF2B2 eukaryotic translation initiation factor 2B subunit beta \[Homo sapiens \(human\) \]](#)

Official Symbol [EIF2B2](#)

Synonyms EIF2B2; eukaryotic translation initiation factor 2B, subunit 2 beta, 39kDa; eukaryotic translation initiation factor 2B, subunit 2 (beta, 39kD); translation initiation factor eIF-2B subunit beta; EIF 2Bbeta; EIF2B; S20I15; S20III15; eIF-2B GDP-GTP exchange factor subunit beta; EIF-2Bbeta;

Gene ID [8892](#)

mRNA Refseq [NM_014239](#)

Protein Refseq [NP_055054](#)

MIM [606454](#)

UniProt ID [P49770](#)

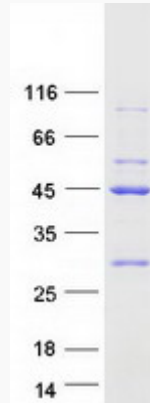
 Tel: 1-631-559-9269 1-516-512-3133

 Email: info@creative-biomart.com  Fax: 1-631-938-8127

 45-1 Ramsey Road, Shirley, NY 11967, USA



SDS-PAGE



Tel: 1-631-559-9269 1-516-512-3133

Email: info@creative-biomart.com Fax: 1-631-938-8127

45-1 Ramsey Road, Shirley, NY 11967, USA