

Recombinant Human EIF2B2 Protein, GST-tagged

Cat. No. EIF2B2-3156H Lot. No. (See product label)

SPECIFICATION

Product Overview Human EIF2B2 full-length ORF (AAH00494, 1 a.a. - 351 a.a.) recombinant protein with GST-tag at N-terminal.

Species Human

Source Wheat Germ

Description This gene encodes the beta subunit of eukaryotic initiation factor-2B (EIF2B). EIF2B is involved in protein synthesis and exchanges GDP and GTP for its activation and deactivation. [provided by RefSeq, Aug 2011]

Molecular Mass 64.35 kDa

AA Sequence
MPGSAAKGSELSESERIESFVETLKRGGGPRSSSEEMARETLGLLRQIITDHRWSNAGEL
MELIRREGRRMTAAQPSETTVGNMVRRLKIIREEYGR LHGRTDESDQQESLHKLLT
SGGLNEDFSFHYAQLQSNII EAINELLVELEGT MENIAAQALEHIHSNEVIMTIGFSRTV
EAFLKEAARKRKFHVIVAECAPFCQGHEMAVNLSKAGIETTVMTDA AIFAVMSRVNK
VIIGTKTILANGALRAVTGHTLALAAKHHSTPLIVCAPMFKLSPQFPNEEDSFHKFVA
PEEVLPFTEGDILEKVSVHCPVFDYVPELITL FSNIGGNAPSYIYRLMSELYHPDDH
VL

Applications
Enzyme-linked Immunoabsorbent Assay
Western Blot (Recombinant protein)
Antibody Production
Protein Array

 Tel: 1-631-559-9269 1-516-512-3133

 Email: info@creative-biomart.com  Fax: 1-631-938-8127

 45-1 Ramsey Road, Shirley, NY 11967, USA

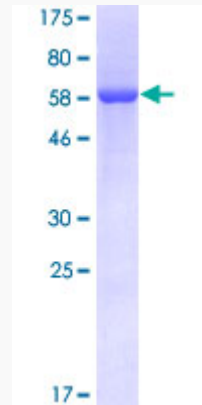
Notes	Best use within three months from the date of receipt of this protein.
Storage	Store at -80 centigrade. Aliquot to avoid repeated freezing and thawing.
Storage Buffer	50 mM Tris-HCl, 10 mM reduced Glutathione, pH=8.0 in the elution buffer.
GENE INFORMATION	
Gene Name	EIF2B2 eukaryotic translation initiation factor 2B, subunit 2 beta, 39kDa [Homo sapiens]
Official Symbol	EIF2B2
Synonyms	EIF2B2; eukaryotic translation initiation factor 2B, subunit 2 beta, 39kDa; eukaryotic translation initiation factor 2B, subunit 2 (beta, 39kD); translation initiation factor eIF-2B subunit beta; EIF 2Bbeta; EIF2B; S20I15; S20III15; eIF-2B GDP-GTP exchange factor subunit beta; EIF-2Bbeta;
Gene ID	8892
mRNA Refseq	NM_014239
Protein Refseq	NP_055054
MIM	606454
UniProt ID	P49770

 Tel: 1-631-559-9269 1-516-512-3133

 Email: info@creative-biomart.com  Fax: 1-631-938-8127

 45-1 Ramsey Road, Shirley, NY 11967, USA

**Quality Control
Testing**



12.5% SDS-PAGE Stained with Coomassie Blue.

 Tel: 1-631-559-9269 1-516-512-3133

 Email: info@creative-biomart.com  Fax: 1-631-938-8127

 45-1 Ramsey Road, Shirley, NY 11967, USA