

Recombinant Human EIF2B5 Protein, GST-tagged

Cat. No. EIF2B5-3159H Lot. No. (See product label)

SPECIFICATION

Product Overview	Human EIF2B5 full-length ORF (AAH13590.1, 1 a.a. - 721 a.a.) recombinant protein with GST-tag at N-terminal.
Species	Human
Source	Wheat Germ
Description	This gene encodes one of five subunits of eukaryotic translation initiation factor 2B (EIF2B), a GTP exchange factor for eukaryotic initiation factor 2 and an essential regulator for protein synthesis. Mutations in this gene and the genes encoding other EIF2B subunits have been associated with leukoencephalopathy with vanishing white matter. [provided by RefSeq, Nov 2009]
Molecular Mass	106.8 kDa
AA Sequence	<p>MAAPVVAPPGVVVSRANKRSGAGPGGSGGGGARGAEEEEPPPPLQAVLVADSFDR RFFPISKDQPRVLLPLANVALIDYTFLEFLTATGVQETFVFCWCAAQIKEHLLKSKWC RPTSLNVVRIITSELYRSLGDVLRDVEDAKALVRSDFLLVYGDVISNITRALEEHLR RKLEKNVSVMTMIFKESSPHPTRCHEDNVVAVDSTTNRVLHFQKTQGLRRFAPP LSLFQGSDDGVEVRYDLLDCHISICSPQVAQLFTDNFDYQTRDDFVRGLLVNEEILG NQIHMHVTAKEYGARVSNLHMYSAVCADVIRRVVYPLTPEANFTDSTTQSCTHSRH NIYRGPEVSLGHGSILEENVLLGSGTVIGSNCFITNSVIGPGCHIGDNVVDQTYLWQ GVRVAAGAQIHQSLLCDNAEVKERVTLKPRSVLTSQVVVGNITLPEGSVISLHPPDA EEDEDDGEFSDDSGADQEKDKVKMKGYNPAEVGAAGKGYLWKAAGMNMEEEEEL</p>

 Tel: 1-631-559-9269 1-516-512-3133

 Email: info@creative-biomart.com  Fax: 1-631-938-8127

 45-1 Ramsey Road, Shirley, NY 11967, USA

QQNLWGLKINMEEEESESESESEQSMDSEEPDSRGGSPQMDDIKVFQNEVLGTLQRGK
 EENISCDNLVLEINSLKYAYNVSLKEVMQVLSHVVLEFPLQQMDSPLDSSRYCALLLP
 LLKAWSPVFRNYIKRAADHLEALAAIEDFFLEHEALGISMAKVLMIFYQLEILAEETILS
 WFSQRDTTDKGQQLRKNQQLQRFIQWLKEAEEESSEDD

Applications	Enzyme-linked Immunoabsorbent Assay Western Blot (Recombinant protein) Antibody Production Protein Array
Notes	Best use within three months from the date of receipt of this protein.
Storage	Store at -80 centigrade. Aliquot to avoid repeated freezing and thawing.
Storage Buffer	50 mM Tris-HCl, 10 mM reduced Glutathione, pH=8.0 in the elution buffer.

GENE INFORMATION

Gene Name	EIF2B5 eukaryotic translation initiation factor 2B, subunit 5 epsilon, 82kDa [Homo sapiens]
Official Symbol	EIF2B5
Synonyms	EIF2B5; eukaryotic translation initiation factor 2B, subunit 5 epsilon, 82kDa; eukaryotic translation initiation factor 2B, subunit 5 (epsilon, 82kD); translation initiation factor eIF-2B subunit epsilon; EIF 2B; EIF2Bepsilon; eIF-2B GDP-GTP exchange factor subunit epsilon; CLE; CACH; LVWM; EIF-2B;
Gene ID	8893
mRNA Refseq	NM_003907

 Tel: 1-631-559-9269 1-516-512-3133

 Email: info@creative-biomart.com  Fax: 1-631-938-8127

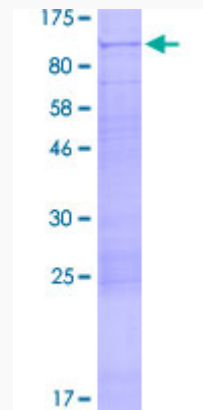
 45-1 Ramsey Road, Shirley, NY 11967, USA

Protein Refseq NP_003898

MIM 603945

UniProt ID Q13144

**Quality Control
Testing**



12.5% SDS-PAGE Stained with Coomassie Blue.

 Tel: 1-631-559-9269 1-516-512-3133

 Email: info@creative-biomart.com  Fax: 1-631-938-8127

 45-1 Ramsey Road, Shirley, NY 11967, USA