

## Recombinant Human EIF2D Protein, GST-tagged

Cat. No. EIF2D-3170H Lot. No. (See product label)

### SPECIFICATION

<b>Product Overview</b>	Human EIF2D full-length ORF ( NP_008824.2, 1 a.a. - 584 a.a.) recombinant protein with GST-tag at N-terminal.
<b>Species</b>	Human
<b>Source</b>	Wheat Germ
<b>Description</b>	This gene encodes a translation initiation factor involved in the recruitment and delivery of aminoacyl-tRNAs to the P-site of the eukaryotic ribosome in a GTP-independent manner. This gene was previously referred to as ligatin, but is now known to localize to the cytoplasm and localize and function with translation factors. Multiple transcript variants encoding different isoforms have been found for this gene. [provided by RefSeq, Jan 2011]
<b>Molecular Mass</b>	91.1 kDa
<b>AA Sequence</b>	MFAKAFRVKSNTAIKGSDDRRKLRADVTTAFPTLGTQVSELVPGKEELNIVKLYAHK GDAVTVYVSGGNPILFELEKNLYPTVYTLWSYPDLLPTFTTWPLVLEKLVGGADLML PGLVMPPAGLPQVQKGDLCALVGNRAPVAIGVAAMSTAEMLTSGLKGRGFSVLH TYQDHLWRSGNKSSPPSIAPLALDSADLSEEKGSVQMDSTLQGDMRHMTLEGEEE NGEVHQAREDKSLSEAPEDTSTRGLNQDSTDSKTLQEQMDELLQQCFHLALKCRV KKADLPLLTSTFLGSHMFSCCPEGRQLDIKKSSYKLSKFLQQMQQEIIQVKELSK GVESIVAVDWKHPRITSFVIPEPSPTSQTIQEGSREQPYHPPDIKPLYCVPASMTLLF QESGHKKGSFLEGSEVRTIVINYAKKNLVDADNKNLVRLDPILCDCILEKNEQHTVM

 Tel: 1-631-559-9269 1-516-512-3133

 Email: [info@creative-biomart.com](mailto:info@creative-biomart.com)  Fax: 1-631-938-8127

 45-1 Ramsey Road, Shirley, NY 11967, USA

KLPWDSLLTRCLEKLQPAYQVTLPGQEPIVKKGRICPIDITLAQRASNKKVTVVRNLE  
 AYGLDPYSVAAILQQRCQASTTVNPAPGAKDSLQVQIQGNQVHHLGWLLLEEYQLP  
 RKHIQGLEKALKPGKKK

<b>Applications</b>	Enzyme-linked Immunoabsorbent Assay Western Blot (Recombinant protein) Antibody Production Protein Array
<b>Notes</b>	Best use within three months from the date of receipt of this protein.
<b>Storage</b>	Store at -80 centigrade. Aliquot to avoid repeated freezing and thawing.
<b>Storage Buffer</b>	50 mM Tris-HCl, 10 mM reduced Glutathione, pH=8.0 in the elution buffer.

## GENE INFORMATION

<b>Gene Name</b>	EIF2D eukaryotic translation initiation factor 2D [ Homo sapiens ]
<b>Official Symbol</b>	EIF2D
<b>Synonyms</b>	EIF2D; eukaryotic translation initiation factor 2D; LGTN; ligatin; hepatocellular carcinoma-associated antigen 56; HCA56;
<b>Gene ID</b>	1939
<b>mRNA Refseq</b>	NM_001201478
<b>Protein Refseq</b>	NP_001188407
<b>MIM</b>	613709

 Tel: 1-631-559-9269 1-516-512-3133

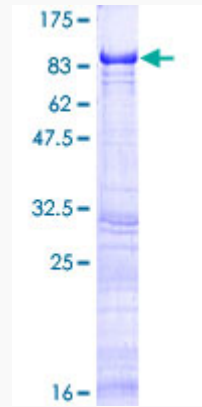
 Email: [info@creative-biomart.com](mailto:info@creative-biomart.com)  Fax: 1-631-938-8127

 45-1 Ramsey Road, Shirley, NY 11967, USA

UniProt ID

P41214

Quality Control  
Testing



12.5% SDS-PAGE Stained with Coomassie Blue.

 Tel: 1-631-559-9269 1-516-512-3133

 Email: [info@creative-biomart.com](mailto:info@creative-biomart.com)  Fax: 1-631-938-8127

 45-1 Ramsey Road, Shirley, NY 11967, USA