

## Recombinant Human EIF2S1 Protein (Met1-Thr239), N-His tagged

Cat. No. EIF2S1-2052H Lot. No. (See product label)

### SPECIFICATION

<b>Product Overview</b>	Recombinant human EIF2S1 (Met1-Thr239) fused with N-His tag was expressed in E. coli.
<b>Species</b>	Human
<b>Source</b>	E.coli
<b>ProteinLength</b>	Met1-Thr239
<b>Form</b>	Lyophilized powder/frozen liquid
<b>Molecular Mass</b>	29.81 kDa
<b>Purity</b>	>90% as determined by SDS-PAGE
<b>Notes</b>	For research use only.
<b>Storage</b>	Use a manual defrost freezer and avoid repeated freeze thaw cycles. Store at 2 to 8 centigrade for one week. Store at -20 to -80 centigrade for twelve months from the date of receipt.
<b>Storage Buffer</b>	0.01M PBS, pH 7.4, 0.02% NLS
<b>Reconstitution</b>	Reconstitute in sterile water for a stock solution.

 Tel: 1-631-559-9269 1-516-512-3133

 Email: [info@creative-biomart.com](mailto:info@creative-biomart.com)  Fax: 1-631-938-8127

 45-1 Ramsey Road, Shirley, NY 11967, USA

**Shipping** They are shipped out with dry ice/blue ice unless customers require otherwise.

## GENE INFORMATION

**Gene Name** EIF2S1 eukaryotic translation initiation factor 2, subunit 1 alpha, 35kDa [ Homo sapiens (human) ]

**Official Symbol** EIF2S1

**Synonyms** EIF2S1; eukaryotic translation initiation factor 2, subunit 1 alpha, 35kDa; EIF2, eukaryotic translation initiation factor 2, subunit 1 (alpha, 35kD); eukaryotic translation initiation factor 2 subunit 1; EIF 2alpha; EIF2A; eIF-2-alpha; eukaryotic translation initiation factor 2 subunit alpha; EIF2; EIF-2; EIF-2A; EIF-2alpha;

**Gene ID** 1965

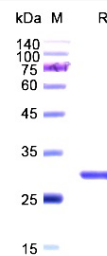
**mRNA Refseq** NM\_004094

**Protein Refseq** NP\_004085

**MIM** 603907

**UniProt ID** P05198

### SDS-PAGE



Tel: 1-631-559-9269 1-516-512-3133

Email: [info@creative-biomart.com](mailto:info@creative-biomart.com) Fax: 1-631-938-8127

45-1 Ramsey Road, Shirley, NY 11967, USA