

# Recombinant Full Length Human EIF2S1 Protein, C-Flag-tagged

**Cat. No.** EIF2S1-262HFL    **Lot. No.** (See product label)

## SPECIFICATION

<b>Product Overview</b>	Recombinant Full Length Human EIF2S1 Protein, fused to Flag-tag at C-terminus, was expressed in Mammalian cells.
<b>Species</b>	Human
<b>Source</b>	Mammalian Cells
<b>Description</b>	The translation initiation factor EIF2 catalyzes the first regulated step of protein synthesis initiation, promoting the binding of the initiator tRNA to 40S ribosomal subunits. Binding occurs as a ternary complex of methionyl-tRNA, EIF2, and GTP. EIF2 is composed of 3 nonidentical subunits, the 36-kD EIF2-alpha subunit (EIF2S1), the 38-kD EIF2-beta subunit, and the 52-kD EIF2-gamma subunit. The rate of formation of the ternary complex is modulated by the phosphorylation state of EIF2-alpha.
<b>Form</b>	25 mM Tris HCl, pH 7.3, 100 mM glycine, 10% glycerol.
<b>Molecular Mass</b>	35.9 kDa
<b>AA Sequence</b>	MPGLSCRFYQHKFPEVEDVVMVNVRSIAEMGAYVSLLEYNNIEGMILLSELSRRRIR SINKLIRIGRNEC VVVIRVDKEKGYIDLSKRRVSPEEAIKCEDKFTKSKTVYSILRHVA EVLEYTKDEQLES LFQRTAWVFDD KYKRPGYGAYDAFKHAVSDPSILDSDLNEDE REVLINNINRRLTPQAVKIRADIEVACYGYEGIDAVKE ALRAGLNCSTENMPIKINLIAP PRYVMTTTTTLERTEGLSVLSQAMAVIKEKIEEKRGVFNVQMEPKVVTD

 Tel: 1-631-559-9269    1-516-512-3133

 Email: [info@creative-biomart.com](mailto:info@creative-biomart.com)     Fax: 1-631-938-8127

 45-1 Ramsey Road, Shirley, NY 11967, USA

TDETELARQMERLERENAEVDGDDDAEEMEAKAEDTRTRPLEQKLISEEDLAANDIL  
DYKDDDDKV

**Purity** > 80% as determined by SDS-PAGE and Coomassie blue staining.

**Stability** Stable for 12 months from the date of receipt of the product under proper storage and handling conditions. Avoid repeated freeze-thaw cycles.

**Storage** Store at -80 centigrade.

**Concentration** >50 ug/mL as determined by microplate BCA method.

**Preparation** Recombinant protein was captured through anti-DDK affinity column followed by conventional chromatography steps.

**Full Length** Full L.

## GENE INFORMATION

**Gene Name** EIF2S1 eukaryotic translation initiation factor 2 subunit alpha [ Homo sapiens (human) ]

**Official Symbol** EIF2S1

**Synonyms** EIF2; EIF-2; EIF2A; EIF-2A; EIF-2alpha

**Gene ID** 1965

**mRNA Refseq** NM\_004094.5

**Protein Refseq** NP\_004085.1

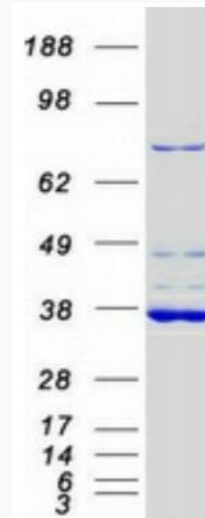
 Tel: 1-631-559-9269 1-516-512-3133

 Email: [info@creative-biomart.com](mailto:info@creative-biomart.com)  Fax: 1-631-938-8127

 45-1 Ramsey Road, Shirley, NY 11967, USA

**MIM** 603907

**UniProt ID** P05198



Coomassie blue staining of purified EIF2S1 protein.

 Tel: 1-631-559-9269 1-516-512-3133

 Email: [info@creative-biomart.com](mailto:info@creative-biomart.com)  Fax: 1-631-938-8127

 45-1 Ramsey Road, Shirley, NY 11967, USA