

Recombinant Human EIF2S1 Protein, Myc/DDK-tagged, C13 and N15-labeled

Cat. No. EIF2S1-3542H **Lot. No.** (See product label)

SPECIFICATION

Product Overview

EIF2S1 MS Standard C13 and N15-labeled recombinant protein (NP_004085) with a C-terminal MYC/DDK tag, was expressed in HEK293 cells.

Species

Human

Source

HEK293

Description

The translation initiation factor EIF2 catalyzes the first regulated step of protein synthesis initiation, promoting the binding of the initiator tRNA to 40S ribosomal subunits. Binding occurs as a ternary complex of methionyl-tRNA, EIF2, and GTP. EIF2 is composed of 3 nonidentical subunits, the 36-kD EIF2-alpha subunit (EIF2S1), the 38-kD EIF2-beta subunit (EIF2S2), and the 52-kD EIF2-gamma subunit (EIF2S3). The rate of formation of the ternary complex is modulated by the phosphorylation state of EIF2-alpha.

Molecular Mass

36.1 kDa

AA Sequence

MPGLSCRFYQHKFPEVEDVVMVNVRSIAEMGAYVSLLEYNNIEGMILLSELSRRRIR
SINKLIRIGRNECVVIRVDKEKGYIDLSKRRVSPEEAIKCEDKFTKSKTVYSILRHVAE
VLEYTKDEQLES LFQRTAWVFDDKYKRPGYGAYDAFKHAVSDPSILDSLNLNEDER
EVLINNINRRLTPQAVKIRADIEVACYGYEGIDAVKEALRAGLNCSTENMPIKINLIAPP
RYVMTTTTLERTEGLSVLSQAMAVIKEKIEEKRGVFNVMQEPKVVTDTDETELARQM
ERLERENAEVDGDDDAEEMEAKAEDTRTRPLEQKLISEEDLAANDILDYKDDDDKV

 Tel: 1-631-559-9269 1-516-512-3133

 Email: info@creative-biomart.com  Fax: 1-631-938-8127

 45-1 Ramsey Road, Shirley, NY 11967, USA

Purity	> 80% as determined by SDS-PAGE and Coomassie blue staining
Stability	Stable for 3 months from receipt of products under proper storage and handling conditions.
Storage	Store at -80 centigrade. Avoid repeated freeze-thaw cycles.
Concentration	50 µg/mL as determined by BCA
Storage Buffer	100 mM glycine, 25 mM Tris-HCl, pH 7.3.

GENE INFORMATION

Gene Name	EIF2S1 eukaryotic translation initiation factor 2 subunit alpha [Homo sapiens (human)]
Official Symbol	EIF2S1
Synonyms	EIF2S1; eukaryotic translation initiation factor 2, subunit 1 alpha, 35kDa; EIF2, eukaryotic translation initiation factor 2, subunit 1 (alpha, 35kD); eukaryotic translation initiation factor 2 subunit 1; EIF 2alpha; EIF2A; eIF-2-alpha; eukaryotic translation initiation factor 2 subunit alpha; EIF2; EIF-2; EIF-2A; EIF-2alpha;
Gene ID	1965
mRNA Refseq	NM_004094
Protein Refseq	NP_004085
MIM	603907

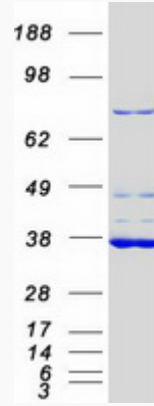
 Tel: 1-631-559-9269 1-516-512-3133

 Email: info@creative-biomart.com  Fax: 1-631-938-8127

 45-1 Ramsey Road, Shirley, NY 11967, USA

UniProt ID P05198

SDS-PAGE



 Tel: 1-631-559-9269 1-516-512-3133

 Email: info@creative-biomart.com  Fax: 1-631-938-8127

 45-1 Ramsey Road, Shirley, NY 11967, USA