

# Active Recombinant Full Length Human EIF2S1 Protein, GST-tagged

**Cat. No.** EIF2S1-4949HF    **Lot. No.** (See product label)

## SPECIFICATION

<b>Product Overview</b>	Full-length human EIF2S1 [1-315(end) amino acids of accession number NP_004085.1] was expressed as N-terminal GST-fusion protein (63 kDa) using E.coli expression system. GST-EIF2S1 was purified by using glutathione sepharose chromatography and gel filtration chromatography.
<b>Species</b>	Human
<b>Source</b>	E.coli
<b>ProteinLength</b>	1-315(end)
<b>Form</b>	50 mM Tris-HCl, 150 mM NaCl, 0.05% Brij35, 1 mM DTT, 10% glycerol, pH7.5
<b>Bio-activity</b>	The phosphorylational ability of the protein was determined by ELISA. The substrate protein was incubated with the indicated enzyme, and after stopping kinase reaction by EDTA, the reaction solution was transferred into glutathione-coated plate. Phosphorylation was detected by anti-phospho antibody and HRP-labeled anti-rabbit IgG (or HRP-labeled anti-mouse IgG).
<b>Purity</b>	95%
<b>Applications</b>	SDS-PAGE
<b>Storage</b>	Store at -80C. Avoid repeating freeze-thaws.

 Tel: 1-631-559-9269    1-516-512-3133

 Email: [info@creative-biomart.com](mailto:info@creative-biomart.com)     Fax: 1-631-938-8127

 45-1 Ramsey Road, Shirley, NY 11967, USA

## GENE INFORMATION

**Gene Name** eukaryotic translation initiation factor 2, subunit 1 alpha, 35kDa

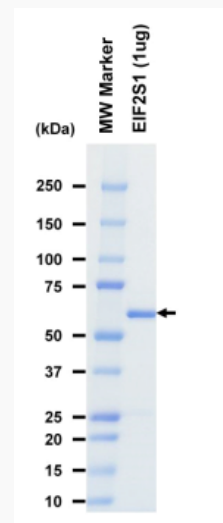
**Official Symbol** EIF2S1

**Synonyms** EIF-2alpha; EIF2A

**Protein Refseq** [NP\\_004085.1](#)

**UniProt ID** [P05198](#)

## SDS-PAGE



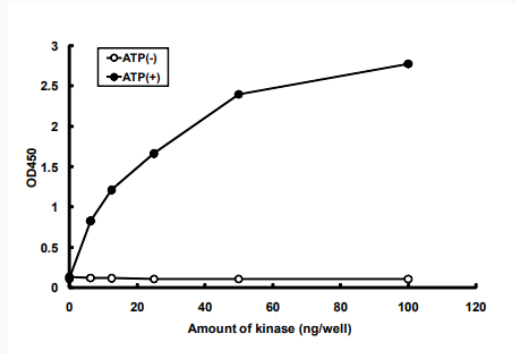
The purity was assessed by SDS-PAGE/CBB staining.

Tel: 1-631-559-9269 1-516-512-3133

Email: [info@creative-biomart.com](mailto:info@creative-biomart.com) Fax: 1-631-938-8127

45-1 Ramsey Road, Shirley, NY 11967, USA

### Activity data



The phosphorylational ability of the protein was determined by ELISA. The substrate protein was incubated with the indicated enzyme, and after stopping kinase reaction by EDTA, the reaction solution was transferred into glutathione-coated plate. Phosphorylation was detected by anti-phospho antibody and HRP-labeled anti-rabbit IgG (or HRP-labeled anti-mouse IgG).

 Tel: 1-631-559-9269 1-516-512-3133

 Email: [info@creative-biomart.com](mailto:info@creative-biomart.com)  Fax: 1-631-938-8127

 45-1 Ramsey Road, Shirley, NY 11967, USA