

Recombinant Human EIF2S1 protein, His-tagged

Cat. No. EIF2S1-7875H Lot. No. (See product label)

SPECIFICATION

Product Overview	Recombinant Human EIF2S1 protein(1-315 aa), fused with N-terminal His tag, was expressed in E. coli.
Species	Human
Source	E. coli
ProteinLength	1-315 aa
Form	The purified protein was lyophilized from sterile phosphate-buffered saline (PBS: 58 mM Na ₂ HPO ₄ , 17 mM NaH ₂ PO ₄ , 68 mM NaCl, pH 7.4). Prior to lyophilization, 5% (w/v) trehalose and 5% (w/v) mannitol were incorporated as cryoprotective excipients. The protein was eluted with a buffer containing 300 mM imidazole.
AASequence	MPGLSCRFYQHKFPEVEDVVMVNVRSIAEMGAYVSLLEYNNIEGMILLSSELSRRRIR SINKLIRIGRNECVVIRVDKEKGYIDLSKRRVSPPEAIKCEDKFTKSKTVYSILRHVAE VLEYTKDEQLESFLFQRTAWVFDDKYKRPYGAYDAFKHAVSDPSILDSLNLNEDER EVLINNINRRLLTPQAVKIRADIEVACYGYEGIDAVKEALRAGLNCSTENMPIKINLIAPP RYVMTTTTLERTEGLSVLSQAMAVIKEKIEEKRGVFNVMQMEPKVVTDDETELARQM ERLERENAEVDGDDDAEEMEAKAED
Purity	85%, by SDS-PAGE.
Storage	Store at 2-8°C for 1-2 weeks. Aliquot and store at -20°C to -80°C for up to 3 months, reconstitution with sterile water and addition of an equal volume of glycerol. Avoid

 Tel: 1-631-559-9269 1-516-512-3133

 Email: info@creative-biomart.com  Fax: 1-631-938-8127

 45-1 Ramsey Road, Shirley, NY 11967, USA

repeat freeze-thaw cycles.

Reconstitution

It is recommended that sterile water be added to the vial to prepare a stock solution of 0.25 ug/ul. Centrifuge the vial at 4°C before opening to recover the entire contents.

GENE INFORMATION

Gene Name

EIF2S1 eukaryotic translation initiation factor 2, subunit 1 alpha, 35kDa [Homo sapiens]

Official Symbol

EIF2S1

Synonyms

EIF2S1; eukaryotic translation initiation factor 2, subunit 1 alpha, 35kDa; EIF2, eukaryotic translation initiation factor 2, subunit 1 (alpha, 35kD); eukaryotic translation initiation factor 2 subunit 1; EIF 2alpha; EIF2A; eIF-2-alpha; eukaryotic translation initiation factor 2 subunit alpha; EIF2; EIF-2; EIF-2A; EIF-2alpha;

mRNA Refseq

[NM_004094](#)

Protein Refseq

[NP_004085](#)

MIM

[603907](#)

UniProt ID

[P05198](#)

Gene ID

[1965](#)

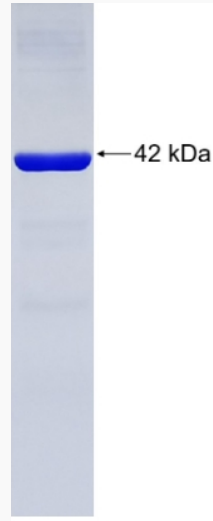
 Tel: 1-631-559-9269 1-516-512-3133

 Email: info@creative-biomart.com  Fax: 1-631-938-8127

 45-1 Ramsey Road, Shirley, NY 11967, USA



SDS-PAGE



Tel: 1-631-559-9269 1-516-512-3133

Email: info@creative-biomart.com Fax: 1-631-938-8127

45-1 Ramsey Road, Shirley, NY 11967, USA