

# Recombinant Full Length Human EIF3B Protein, C-Flag-tagged

Cat. No. EIF3B-1994HFL Lot. No. (See product label)

## SPECIFICATION

<b>Product Overview</b>	Recombinant Full Length Human EIF3B Protein, fused to Flag-tag at C-terminus, was expressed in Mammalian cells.
<b>Species</b>	Human
<b>Source</b>	Mammalian Cells
<b>Description</b>	Enables RNA binding activity. Contributes to translation initiation factor activity. Involved in several processes, including IRES-dependent viral translational initiation; translational initiation; and viral translational termination-reinitiation. Located in extracellular exosome. Part of eukaryotic translation initiation factor 3 complex.
<b>Form</b>	25 mM Tris HCl, pH 7.3, 100 mM glycine, 10% glycerol.
<b>Molecular Mass</b>	92.3 kDa
<b>AA Sequence</b>	<p>MQDAENVAVPEAAEERAEPGQQQPAAEPPPAEGLLRPAGPGAPEAAGTEASSEEV          GIAEAGPEPEVRTEP AAEAEAASGPSSESPSPAEEELPGSHAEPVPAQGEAPGE          QARDERSDSRAQAVSEDAGGNEGRAAEAEAP RALENGDADEPSFSDPEDFVDDVS          EEELLGDVCLKDRPQEQADGIDSVIVVDNVPQVGPDRLEKLNVIHKKI FSKFGKITNDFY          PEEDGKTKGYIFLEYASPAHAVDAVKNADGYKLDKQHTFRVNLFTDFDKYMTISDEW          D IPEKQPFKDLGNLRYWLEEAECRDQYSVIFESGDRTSIFWNDVKDPVSIEERARW          TETYVRWSPKGTyla TFHQRGIALWGGEKFKQIQRFHQGVQLIDFSPCERYLVTF          SPLMDTQDDPQAIWIDILTGHKKRGFHC ESSAHWPFIKWSHDGKFFARMTLDTLSI          YETPSMGLLDKSLKISGIKDFSWSPGGNIIAFWVPEKDKDIP ARVTLMQLPTRQEIRV</p>

 Tel: 1-631-559-9269 1-516-512-3133

 Email: [info@creative-biomart.com](mailto:info@creative-biomart.com)  Fax: 1-631-938-8127

 45-1 Ramsey Road, Shirley, NY 11967, USA

RNLFNVVDCKLHWQKNGDYLCVKVDRTPKGTQGVTNFEIFRMREKQVPVDVVE M  
 KETIIAFAWEPNGSKFAVLHGEAPRISVSFYHVKNNGKIELIKMFDKQQANTIFWSPQ  
 GQFVVLGLRS MNGALAFVDTSDCTVMNIAEHYMASDVEWDPTGRYVVTSSVSWW  
 SHKVDNAYWLWTFQGRLLQKNNKDRFC QLLWRPRPPTLLSQEQIKQIKKDLKKYSK  
 IFEQKDRLSQSKASKELVERRRTMMEDFRKYRKMAQELYME QKNERLELRGGVDT  
 DELDSNVDDWEEETIEFFVTEEIPLGNQE SGPTRTRPLEQKLISEEDLAANDILDYK  
 DDDDKV

**Purity** > 80% as determined by SDS-PAGE and Coomassie blue staining.

**Stability** Stable for 12 months from the date of receipt of the product under proper storage and handling conditions. Avoid repeated freeze-thaw cycles.

**Storage** Store at -80 centigrade.

**Concentration** >50 ug/mL as determined by microplate BCA method.

**Preparation** Recombinant protein was captured through anti-DDK affinity column followed by conventional chromatography steps.

**Full Length** Full L.

## GENE INFORMATION

**Gene Name** EIF3B eukaryotic translation initiation factor 3 subunit B [ Homo sapiens (human) ]

**Official Symbol** EIF3B

**Synonyms** eukaryotic translation initiation factor 3 subunit B

**Gene ID** 8662

 Tel: 1-631-559-9269 1-516-512-3133

 Email: [info@creative-biomart.com](mailto:info@creative-biomart.com)  Fax: 1-631-938-8127

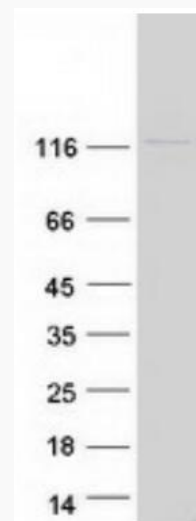
 45-1 Ramsey Road, Shirley, NY 11967, USA

mRNA Refseq [NM\\_001037283.2](#)

Protein Refseq [NP\\_001032360.1](#)

MIM [603917](#)

UniProt ID [P55884](#)



Coomassie blue staining of purified EIF3B protein.

 Tel: 1-631-559-9269 1-516-512-3133

 Email: [info@creative-biomart.com](mailto:info@creative-biomart.com)  Fax: 1-631-938-8127

 45-1 Ramsey Road, Shirley, NY 11967, USA