

# Recombinant Human EIF3C Protein, Myc/DDK-tagged, C13 and N15-labeled

**Cat. No.** EIF3C-2133H    **Lot. No.** (See product label)

## SPECIFICATION

|                         |  |
|-------------------------|--|
| <b>Product Overview</b> | EIF3C MS Standard C13 and N15-labeled recombinant protein (NP_001032897) with a C-terminal MYC/DDK tag, was expressed in HEK293 cells.   |
| <b>Species</b>          | Human  |
| <b>Source</b>           | HEK293   |
| <b>Description</b>      | Component of the eukaryotic translation initiation factor 3 (eIF-3) complex, which is required for several steps in the initiation of protein synthesis.   |
| <b>Molecular Mass</b>   | 105.3 kDa  |
| <b>AA Sequence</b>      | MSRFFTTGSDSESESSLGSEELVTKPVGGNYGKQPLLLSEDEEDTKRVVRSADKDR<br>FEELTNLIRTNAMKIRDVTKCLEEFELLGKAYGKAKSIVDKEGVPRFYIRILADLEDY<br>LNELWEDKEGKKKMNNKNAKALSTLRQKIRKYNRDFESHITSYKQNPEQSADEDAE<br>KNEEDSEGSSDEDEDEDGVSAATFLKKKSEAPSGESRKFLKKMDDEDEDESDSED<br>DEDWDTGSTSSDSDSEEEEGKQTALASRFLKKAPTTDEDKAAEKKREDKAKKKH<br>DRKSKRLDEEEEDNEGGEWERVRGGVPLVKEPKMFAKGTEITHAVVIKKLNEILQA<br>RGKKGTDRAAQIELLQLLVQIAAENNLGEGVIVKIKFNIIASLYDYNPNLATYMKPEMW<br>GKCLDCINELMDILFANPNIFVGENILEESENLHNADQPLRVGCILTLVERMDEEFTK<br>IMQNTDPHSQEYVEHLKDEAQVCAIHERVQRYLEEKGTTEEVCRIYLLRILHTYYKFDY<br>KAHQRQLTPPEGSSKSEQDQAENEGEDSAVLMERLCKYIYAKDRTDRIRTCAILCHI<br>YHHALHSRWYQARDLMLMSHLQDNIQHADPPVQILYNRTMVQLGICAFRQGLTKDA |

 Tel: 1-631-559-9269    1-516-512-3133

 Email: [info@creative-biomart.com](mailto:info@creative-biomart.com)     Fax: 1-631-938-8127

 45-1 Ramsey Road, Shirley, NY 11967, USA

HNALLDIQSSGRAKELLGQGLLLRSLQERNQEKEKVERRRRQVPFHLHINLELLECVY  
 LVSAMLEIPYMAAHESDARRRMISKQFHHLQRLVGERQPLLGPPEMREHVVAASK  
 AMKMGDWKTCHSFIINEKMNGKVWDLFPEADKVRTMLVRKIQEESLRTYLFTYSSV  
 YDSISMETLSDMFELDLPTVHSIISKMIINEELMASLDQPTQTVVMHRTEPTAQQLAL  
 QLAEKLGSLVENNERVFDHKQGTYGGYFRDQKDGYSRKNEGYMRRGGYRQQQSQT  
 AYTRTRPLEQKLISEEDLAANDILDYKDDDDKV

**Purity** > 80% as determined by SDS-PAGE and Coomassie blue staining

**Stability** Stable for 3 months from receipt of products under proper storage and handling conditions.

**Storage** Store at -80 centigrade. Avoid repeated freeze-thaw cycles.

**Concentration** 50 µg/mL as determined by BCA

**Storage Buffer** 100 mM glycine, 25 mM Tris-HCl, pH 7.3.

## GENE INFORMATION

**Gene Name** EIF3C eukaryotic translation initiation factor 3 subunit C [ Homo sapiens (human) ]

**Official Symbol** EIF3C

**Synonyms** EIF3C; eukaryotic translation initiation factor 3 subunit C; EIF3CL; EIF3S8; eIF3-p110; eukaryotic translation initiation factor 3 subunit C; cell migration-inducing protein 17; eIF3 p110; eukaryotic translation initiation factor 3 subunit 8; eukaryotic translation initiation factor 3, subunit 8 (110kD); eukaryotic translation initiation factor 3, subunit 8, 110kDa

**Gene ID** 8663

 Tel: 1-631-559-9269 1-516-512-3133

 Email: [info@creative-biomart.com](mailto:info@creative-biomart.com)  Fax: 1-631-938-8127

 45-1 Ramsey Road, Shirley, NY 11967, USA

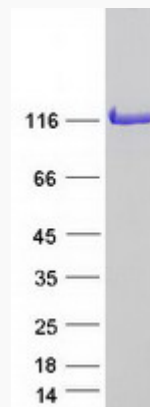
mRNA Refseq [NM\\_001037808](#)

Protein Refseq [NP\\_001032897](#)

MIM [603916](#)

UniProt ID [Q99613](#)

SDS-PAGE



 Tel: 1-631-559-9269 1-516-512-3133

 Email: [info@creative-biomart.com](mailto:info@creative-biomart.com)  Fax: 1-631-938-8127

 45-1 Ramsey Road, Shirley, NY 11967, USA