

# Recombinant Full Length Human EIF3E Protein, C-Flag-tagged

Cat. No. EIF3E-1080HFL Lot. No. (See product label)

## SPECIFICATION

<b>Product Overview</b>	Recombinant Full Length Human EIF3E Protein, fused to Flag-tag at C-terminus, was expressed in Mammalian cells.
<b>Species</b>	Human
<b>Source</b>	Mammalian Cells
<b>Description</b>	Enables protein N-terminus binding activity. Contributes to translation initiation factor activity. Involved in positive regulation of mRNA binding activity; regulation of gene expression; and translational initiation. Located in cytosol and nucleus. Part of eukaryotic translation initiation factor 3 complex. Colocalizes with PML body.
<b>Form</b>	25 mM Tris HCl, pH 7.3, 100 mM glycine, 10% glycerol.
<b>Molecular Mass</b>	52 kDa
<b>AA Sequence</b>	<p>MAEYDLTTRIAHFDRHLVFPILLEFLSVKEIYNEKELLQGKLDLLSDTNMVDVFAMDVY  KNLYSDDIPHAL REKRRTTVVAQLKQLQAETEPVKMFEDPETTRQMQSTRDGRMLF  DYLADKHGFRQEYLDTLRYAKFQYE CGNYSGAAEYLYFFRVLPATDRNALSSLW  GKLASEILMQNWDAVMEDLTRLKETIDNNSVSSPLQSLQQ RTWLIHWSLFFVFNHP  KGRDNIIDLFLYQPQYLNAIQTMCPHILRYLTTAVITNKDVRKRRQVLKDLVKV IQQES  YTYKDPITEFVECLYVNFDFDGAQKKLRECESVLVNDFFLVACLEDFIENARLFIFETF  CRIHQC ISINMLADKLNMTPEEAERWIVNLIRNARLDAKIDSKLGHVVMGNNAVSPY  QQVIEKTKSLSFRSQMLAM  NIEKKNQNSRSEAPNWATQDSGFYTRTRPLEQKLISEEDLAANDILDYKDDDDKV</p>

 Tel: 1-631-559-9269 1-516-512-3133

 Email: [info@creative-biomart.com](mailto:info@creative-biomart.com)  Fax: 1-631-938-8127

 45-1 Ramsey Road, Shirley, NY 11967, USA

<b>Purity</b>	> 80% as determined by SDS-PAGE and Coomassie blue staining.
<b>Stability</b>	Stable for 12 months from the date of receipt of the product under proper storage and handling conditions. Avoid repeated freeze-thaw cycles.
<b>Storage</b>	Store at -80 centigrade.
<b>Concentration</b>	>50 ug/mL as determined by microplate BCA method.
<b>Preparation</b>	Recombinant protein was captured through anti-DDK affinity column followed by conventional chromatography steps.
<b>Full Length</b>	Full L.

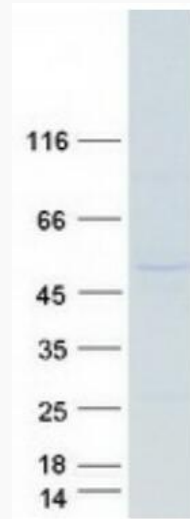
## GENE INFORMATION

<b>Gene Name</b>	EIF3E eukaryotic translation initiation factor 3 subunit E [ Homo sapiens (human) ]
<b>Official Symbol</b>	EIF3E
<b>Synonyms</b>	INT6; EIF3S6; EIF3-P48; eIF3-p46
<b>Gene ID</b>	3646
<b>mRNA Refseq</b>	NM_001568.3
<b>Protein Refseq</b>	NP_001559.1
<b>MIM</b>	602210
<b>UniProt ID</b>	P60228

 Tel: 1-631-559-9269 1-516-512-3133

 Email: [info@creative-biomart.com](mailto:info@creative-biomart.com)  Fax: 1-631-938-8127

 45-1 Ramsey Road, Shirley, NY 11967, USA



Coomassie blue staining of purified EIF3E protein.

 Tel: 1-631-559-9269 1-516-512-3133

 Email: [info@creative-biomart.com](mailto:info@creative-biomart.com)  Fax: 1-631-938-8127

 45-1 Ramsey Road, Shirley, NY 11967, USA