

Recombinant Human EIF3E Protein, Myc/DDK-tagged, C13 and N15-labeled

Cat. No. EIF3E-2043H **Lot. No.** (See product label)

SPECIFICATION

Product Overview	EIF3E MS Standard C13 and N15-labeled recombinant protein (NP_001559) with a C-terminal MYC/DDK tag, was expressed in HEK293 cells.
Species	Human
Source	HEK293
Description	Component of the eukaryotic translation initiation factor 3 (eIF-3) complex, which is required for several steps in the initiation of protein synthesis.
Molecular Mass	52.2 kDa
AA Sequence	<p>MAEYDLTTRIAHFDRHLVFPILLEFLSVKEIYNEKELLQGKLDLLSDTNMVDFAVDV KNLYSDDIPHALREKRTTVVAQLKQLQAETEPVVKMFEDPETTRQMQSTRDGRMLF DYLADKHGFRQEYLDTRYRYAKFQYECGNYSGAAEYLYFFRVLVPATDRNALSSLW GKLASEILMQNWDAVMEDLTRLKETIDNNSVSSPLQSLQQRWLIHWSLFFVFNHPK GRDNIIDFLYQPQYLNAIQTMCPHILRYLTTAVITNKDVRKRRQVLKDLVKVIQQESY TYKDPITEFVECLYVNFDFDGAQKKLRECESVLVNDFFLVACLEDFIENARLFIFETFC RIHQCISINMLADKLNMTPEEAERWIVNLIRNARLDAKIDSKLGHVVMGNNAVSPYQQ VIEKTKSLSFRSQMLAMNIEKKLNQNSRSEAPNWATQDSGFYTRTRPLEQKLISEED LAANDILDYKDDDDKV</p>
Purity	> 80% as determined by SDS-PAGE and Coomassie blue staining

 Tel: 1-631-559-9269 1-516-512-3133

 Email: info@creative-biomart.com  Fax: 1-631-938-8127

 45-1 Ramsey Road, Shirley, NY 11967, USA

Stability	Stable for 3 months from receipt of products under proper storage and handling conditions.
Storage	Store at -80 centigrade. Avoid repeated freeze-thaw cycles.
Concentration	50 µg/mL as determined by BCA
Storage Buffer	100 mM glycine, 25 mM Tris-HCl, pH 7.3.

GENE INFORMATION

Gene Name	EIF3E eukaryotic translation initiation factor 3 subunit E [Homo sapiens (human)]
Official Symbol	EIF3E
Synonyms	EIF3E; eukaryotic translation initiation factor 3, subunit E; EIF3S6, eukaryotic translation initiation factor 3, subunit 6 48kDa, INT6; eukaryotic translation initiation factor 3 subunit E; eIF3 p48; eIF3e; eIF-3 p48; mammary tumor-associated protein INT6; viral integration site protein INT-6 homolog; eukaryotic translation initiation factor 3 subunit 6; murine mammary tumor integration site 6 (oncogene homolog); eukaryotic translation initiation factor 3, subunit 6 48kDa; eukaryotic translation initiation factor 3, subunit 6 (48kD); INT6; EIF3S6; EIF3-P48; eIF3-p46;
Gene ID	3646
mRNA Refseq	NM_001568
Protein Refseq	NP_001559
MIM	602210

 Tel: 1-631-559-9269 1-516-512-3133

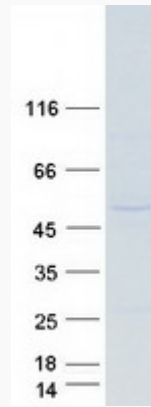
 Email: info@creative-biomart.com  Fax: 1-631-938-8127

 45-1 Ramsey Road, Shirley, NY 11967, USA

UniProt ID

P60228

SDS-PAGE



 Tel: 1-631-559-9269 1-516-512-3133

 Email: info@creative-biomart.com  Fax: 1-631-938-8127

 45-1 Ramsey Road, Shirley, NY 11967, USA