

## Recombinant Human EIF3E Protein (1-445 aa), GST-tagged

Cat. No. EIF3E-2115H Lot. No. (See product label)

### SPECIFICATION

**Product Overview** Recombinant Human EIF3E Protein (1-445 aa) is produced by E. coli expression system. This protein is fused with a GST tag at the N-terminal. Research Area: Epigenetics and Nuclear Signaling. Protein Description: Full Length.

**Species** Human

**Source** E.coli

**ProteinLength** 1-445 aa

**Description** Component of the eukaryotic translation initiation factor 3 (eIF-3) complex, which is required for several steps in the initiation of protein synthesis . The eIF-3 complex associates with the 40S ribosome and facilitates the recruitment of eIF-1, eIF-1A, eIF-2:GTP:methionyl-tRNA<sub>i</sub> and eIF-5 to form the 43S pre-initiation complex (43S PIC). The eIF-3 complex stimulates mRNA recruitment to the 43S PIC and scanning of the mRNA for AUG recognition. The eIF-3 complex is also required for disassembly and recycling of post-termination ribosomal complexes and subsequently prevents premature joining of the 40S and 60S ribosomal subunits prior to initiation . The eIF-3 complex specifically targets and initiates translation of a subset of mRNAs involved in cell proliferation, including cell cycling, differentiation and apoptosis, and uses different modes of RNA stem-loop binding to exert either translational activation or repression . Required for nonsense-mediated mRNA decay (NMD); may act in conjunction with UPF2 to divert mRNAs from translation to the NMD pathway . May interact with MCM7 and EPAS1 and regulate the proteasome-mediated degradation

 Tel: 1-631-559-9269 1-516-512-3133

 Email: [info@creative-biomart.com](mailto:info@creative-biomart.com)  Fax: 1-631-938-8127

 45-1 Ramsey Road, Shirley, NY 11967, USA

of these proteins.

**Form** Tris-based buffer, 50% glycerol

**Molecular Mass** 79.1 kDa

**AA Sequence**

MAEYDLTTRIAHFDRHLVFPILLEFLSVKEIYNEKELLQGKLDLLSDTNMVDFAFDVY  
 KNLYSDDIPHALREKRRTTVVAQLKQLQAETEPVVKMFEDPETTRQMQSTRDGRMLF  
 DYLDADKHGFRQEYLDLTYRYAKFQYECGNYSGAAEYLYFFRVLPATDRNALSSLW  
 GKLASEILMQNWDAAMEDLTRLKETIDNNSVSSPLQSLQQRWLIHWSLFFVFNHPK  
 GRDNIIDLFLYQPQYLNAIQTMCPHILRYLTTAVITNKDVRKRRQVLKDLVKVIQQESY  
 TYKDPITEFVECLYVNFDFDGAQKKLRECESVLVNDFFLVACLEDFIENARLFIFETFC  
 RIHQCSINMLADKLNMTPEEAERWIVNLIRNARLDAKIDSKLGHVVMGNNAVSPYQQ  
 VIEKTKSLSFRSQMLAMNIEKKLNQNSRSEAPNWATQDSGFY

**Purity** > 90% as determined by SDS-PAGE.

**Notes** Repeated freezing and thawing is not recommended. Store working aliquots at 4 centigrade for up to one week.

**Storage** The shelf life is related to many factors, storage state, buffer ingredients, storage temperature and the stability of the protein itself. Generally, the shelf life of liquid form is 6 months at -20 centigrade/-80 centigrade. The shelf life of lyophilized form is 12 months at -20 centigrade/-80 centigrade.

**Concentration** A hardcopy of COA will be sent along with the products. Please refer to it for detailed information.

## GENE INFORMATION

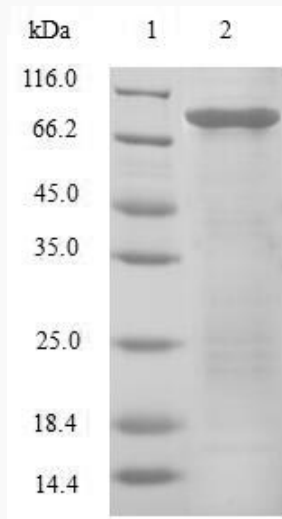
**Gene Name** EIF3E eukaryotic translation initiation factor 3, subunit E [ Homo sapiens ]

 Tel: 1-631-559-9269 1-516-512-3133

 Email: [info@creative-biomart.com](mailto:info@creative-biomart.com)  Fax: 1-631-938-8127

 45-1 Ramsey Road, Shirley, NY 11967, USA

<b>Official Symbol</b>	EIF3E
<b>Synonyms</b>	EIF3E; eIF3 p48; eIF3e; eIF-3 p48; INT6; EIF3S6; EIF3-P48; eIF3-p46;
<b>Gene ID</b>	3646
<b>mRNA Refseq</b>	NM_001568
<b>Protein Refseq</b>	NP_001559
<b>MIM</b>	602210
<b>UniProt ID</b>	P60228



(Tris-Glycine gel) Discontinuous SDS-PAGE (reduced) with 5% enrichment gel and 15% separation gel.

Tel: 1-631-559-9269 1-516-512-3133

Email: [info@creative-biomart.com](mailto:info@creative-biomart.com) Fax: 1-631-938-8127

45-1 Ramsey Road, Shirley, NY 11967, USA