

Recombinant Human EIF3E Protein, GST-tagged

Cat. No. EIF3E-3179H Lot. No. (See product label)

SPECIFICATION

Product Overview	Human EIF3S6 full-length ORF (NP_001559.1, 1 a.a. - 445 a.a.) recombinant protein with GST-tag at N-terminal.
Species	Human
Source	Wheat Germ
Description	EIF3E (Eukaryotic Translation Initiation Factor 3 Subunit E) is a Protein Coding gene. Among its related pathways are Viral mRNA Translation and Activation of the mRNA upon binding of the cap-binding complex and eIFs, and subsequent binding to 43S. GO annotations related to this gene include poly(A) RNA binding and translation initiation factor activity.
Molecular Mass	78.6 kDa
AA Sequence	<p>MAEYDLTTRIAHFDRHLVFPILLEFLSVKEIYNEKELLQGKLDLLSDTNMVFAMDVY KNLYSDDIPHALREKRRTTVVAQLKQLQAETEPVVKMFEDPETTRQMQSTRDGRMLF DYLADKHGFRQEYLDTLRYAKFQYECGNYSGAAEYLYFFRVLVPATDRNALSSLW GKLASEILMQNWDAAMEDLTRLKETIDNNSVSSPLQSLQQRWLIHWSLFFVFNHPK GRDNIIDFLYQPQYLNAIQTMCPHILRYLTTAVITNKDVRKRRQVLKDLVKVIQQESY TYKDPITEFVECLYVNFDFDGAQKKLRECESVLVNDFFLVACLEDFIENARLFIFETFC RIHQCISINMLADKLNMTPEEAERWIVNLRNARLDAKIDSKLGHVVMGNNVSPYQQ VIEKTKSLSFRSQMLAMNIEKKLNQNSRSEAPNWATQDSGFY</p>
Applications	Enzyme-linked Immunoabsorbent Assay

 Tel: 1-631-559-9269 1-516-512-3133

 Email: info@creative-biomart.com  Fax: 1-631-938-8127

 45-1 Ramsey Road, Shirley, NY 11967, USA

Western Blot (Recombinant protein)
 Antibody Production
 Protein Array

Notes	Best use within three months from the date of receipt of this protein.
Storage	Store at -80 centigrade. Aliquot to avoid repeated freezing and thawing.
Storage Buffer	50 mM Tris-HCl, 10 mM reduced Glutathione, pH=8.0 in the elution buffer.

GENE INFORMATION

Gene Name EIF3E eukaryotic translation initiation factor 3, subunit E [Homo sapiens]

Official Symbol EIF3E

Synonyms

EIF3E; eukaryotic translation initiation factor 3, subunit E; EIF3S6, eukaryotic translation initiation factor 3, subunit 6 48kDa , INT6; eukaryotic translation initiation factor 3 subunit E; eIF3 p48; eIF3e; eIF-3 p48; mammary tumor-associated protein INT6; viral integration site protein INT-6 homolog; eukaryotic translation initiation factor 3 subunit 6; murine mammary tumor integration site 6 (oncogene homolog); eukaryotic translation initiation factor 3, subunit 6 48kDa; eukaryotic translation initiation factor 3, subunit 6 (48kD); INT6; EIF3S6; EIF3-P48; eIF3-p46;

Gene ID 3646

mRNA Refseq NM_001568

Protein Refseq NP_001559

MIM 602210

 Tel: 1-631-559-9269 1-516-512-3133

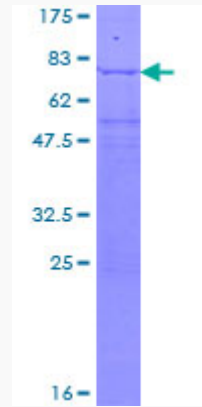
 Email: info@creative-biomart.com  Fax: 1-631-938-8127

 45-1 Ramsey Road, Shirley, NY 11967, USA

UniProt ID

P60228

Quality Control
Testing



12.5% SDS-PAGE Stained with Coomassie Blue.

 Tel: 1-631-559-9269 1-516-512-3133

 Email: info@creative-biomart.com  Fax: 1-631-938-8127

 45-1 Ramsey Road, Shirley, NY 11967, USA