

Recombinant Human EIF3I Protein, GST-tagged

Cat. No. EIF3I-3187H **Lot. No.** (See product label)

SPECIFICATION

Product Overview	Human EIF3S2 full-length ORF (NP_003748.1, 1 a.a. - 325 a.a.) recombinant protein with GST-tag at N-terminal.
Species	Human
Source	Wheat Germ
Description	EIF3I (Eukaryotic Translation Initiation Factor 3 Subunit I) is a Protein Coding gene. Among its related pathways are Viral mRNA Translation and Activation of the mRNA upon binding of the cap-binding complex and eIFs, and subsequent binding to 43S. GO annotations related to this gene include translation initiation factor activity. An important paralog of this gene is STRAP.
Molecular Mass	62.9 kDa
AA Sequence	MKPILLQGHERSITQIKYNREGDLLFTVAKDPIVNVWYSVNGERLGTVMGHTGAVWC VDADWDTKHVLTGSADNSCRLWDCETGKQLALLKTNSAVRTCGFDFGGNIIMFSTD KQMGYQCFVSFFDLRDPQIDNNEPYMKIPCNSKITSVWGPLGECIIAGHESGEL NQYSAKSGEVLVNVKEHSRQINDIQLSRDMTMFVTASKDNTAKLFDSTTLEHQKTFR TERPVNSAALSPNYDHVVLGGGQEAMDVTTTSTRIGKFEARFFHLAFEEEEFGRVKG HFGPINSVAFHPDGKSYSSGGEDGYVRIHYFDPQYFEFEFEA
Applications	Enzyme-linked Immunoabsorbent Assay Western Blot (Recombinant protein) Antibody Production

 Tel: 1-631-559-9269 1-516-512-3133

 Email: info@creative-biomart.com  Fax: 1-631-938-8127

 45-1 Ramsey Road, Shirley, NY 11967, USA

Protein Array

Notes	Best use within three months from the date of receipt of this protein.
Storage	Store at -80 centigrade. Aliquot to avoid repeated freezing and thawing.
Storage Buffer	50 mM Tris-HCl, 10 mM reduced Glutathione, pH=8.0 in the elution buffer.

GENE INFORMATION

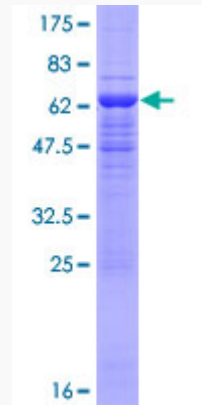
Gene Name	EIF3I eukaryotic translation initiation factor 3, subunit I [Homo sapiens]
Official Symbol	EIF3I
Synonyms	EIF3I; eukaryotic translation initiation factor 3, subunit I; EIF3S2, eukaryotic translation initiation factor 3, subunit 2 beta, 36kDa; eukaryotic translation initiation factor 3 subunit I; eIF3 beta; eIF3 p36; eIF3i; TRIP 1; eIF-3-beta; predicted protein of HQ2242; TGFbeta receptor-interacting protein 1; TGF-beta receptor-interacting protein 1; eukaryotic translation initiation factor 3 subunit 2; eukaryotic translation initiation factor 3, subunit 2 beta, 36kDa; eukaryotic translation initiation factor 3, subunit 2 (beta, 36kD); TRIP1; EIF3S2; TRIP-1; PRO2242; eIF3-p36; eIF3-beta;
Gene ID	8668
mRNA Refseq	NM_003757
Protein Refseq	NP_003748
MIM	603911
UniProt ID	Q13347

 Tel: 1-631-559-9269 1-516-512-3133

 Email: info@creative-biomart.com  Fax: 1-631-938-8127

 45-1 Ramsey Road, Shirley, NY 11967, USA

**Quality Control
Testing**



12.5% SDS-PAGE Stained with Coomassie Blue.

 Tel: 1-631-559-9269 1-516-512-3133

 Email: info@creative-biomart.com  Fax: 1-631-938-8127

 45-1 Ramsey Road, Shirley, NY 11967, USA