

# Recombinant Full Length Human EIF4A3 Protein, C-Flag-tagged

**Cat. No.** EIF4A3-848HFL    **Lot. No.** (See product label)

## SPECIFICATION

<b>Product Overview</b>	Recombinant Full Length Human EIF4A3 Protein, fused to Flag-tag at C-terminus, was expressed in Mammalian cells.
<b>Species</b>	Human
<b>Source</b>	Mammalian Cells
<b>Description</b>	This gene encodes a member of the DEAD box protein family. DEAD box proteins, characterized by the conserved motif Asp-Glu-Ala-Asp (DEAD), are putative RNA helicases. They are implicated in a number of cellular processes involving alteration of RNA secondary structure, such as translation initiation, nuclear and mitochondrial splicing, and ribosome and spliceosome assembly. Based on their distribution patterns, some members of this family are believed to be involved in embryogenesis, spermatogenesis, and cellular growth and division. The protein encoded by this gene is a nuclear matrix protein. Its amino acid sequence is highly similar to the amino acid sequences of the translation initiation factors eIF4A1 and eIF4A2, two other members of the DEAD box protein family.
<b>Form</b>	25 mM Tris HCl, pH 7.3, 100 mM glycine, 10% glycerol.
<b>Molecular Mass</b>	46.7 kDa
<b>AA Sequence</b>	MATTATMATSGSARKRLLKEEDMTKVEFETSEEVDVTPTFDTMGLREDLLRGIYAYG FEKPSAIQQRAIK QIIKGRDVIAQSQSGTGKTATFSISVLQCLDIQVRETQALILAPTRE

 Tel: 1-631-559-9269    1-516-512-3133

 Email: [info@creative-biomart.com](mailto:info@creative-biomart.com)     Fax: 1-631-938-8127

 45-1 Ramsey Road, Shirley, NY 11967, USA

LAVQIQKGLLALGDYMNQCHAC IGGTNVGEDIRKLDYGQHVVAGTPGRVDFMIRR  
 RSLRTRAIKMLVLDEADEMLNKGFKEQIYDVYRYLPP ATQVVLISATLPHEILEMTNK  
 FMTDPIRILVKRDELTLLEGIKQFFVAVEREEWKFDLTLCDLYDTLTITQA VIFCNTKRKV  
 DWLTEKMREANFTVSSMHGDMPQKERESIMKEFRSGASRVLISTDVWARGLDVPPQ  
 VSLII  
 NYDLPNNRELYIHRIGRSGRYGRKGVAINFVKNDIRILRDIEQYYSTQIDEMPMNVA  
 DLITRTRPLEQKLISEEDLAANDILDYKDDDDKV

**Purity** > 80% as determined by SDS-PAGE and Coomassie blue staining.

**Stability** Stable for 12 months from the date of receipt of the product under proper storage and handling conditions. Avoid repeated freeze-thaw cycles.

**Storage** Store at -80 centigrade.

**Concentration** >50 ug/mL as determined by microplate BCA method.

**Preparation** Recombinant protein was captured through anti-DDK affinity column followed by conventional chromatography steps.

**Protein Families** Druggable Genome

**Protein Pathways** Spliceosome

**Full Length** Full L.

## GENE INFORMATION

**Gene Name** EIF4A3 eukaryotic translation initiation factor 4A3 [ Homo sapiens (human) ]

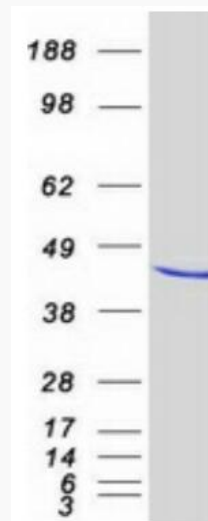
**Official Symbol** EIF4A3

 Tel: 1-631-559-9269 1-516-512-3133

 Email: [info@creative-biomart.com](mailto:info@creative-biomart.com)  Fax: 1-631-938-8127

 45-1 Ramsey Road, Shirley, NY 11967, USA

<b>Synonyms</b>	Fal1; RCPS; DDX48; MUK34; NUK34; NMP265; eIF4AIII; eIF4A-III; eIF-4A-III
<b>Gene ID</b>	9775
<b>mRNA Refseq</b>	NM_014740.4
<b>Protein Refseq</b>	NP_055555.1
<b>MIM</b>	608546
<b>UniProt ID</b>	P38919



Coomassie blue staining of purified EIF4A3 protein.

 Tel: 1-631-559-9269 1-516-512-3133

 Email: [info@creative-biomart.com](mailto:info@creative-biomart.com)  Fax: 1-631-938-8127

 45-1 Ramsey Road, Shirley, NY 11967, USA