

Recombinant Human eukaryotic translation initiation factor 4B Protein, His tagged

Cat. No. EIF4B-204H Lot. No. (See product label)

SPECIFICATION

Product Overview	Recombinant human ANXA6 protein (P23588-1) (Met 1-Asp673) with a His tag at the C-terminus was expressed in E. coli.
Species	Human
Source	E.coli
ProteinLength	395-611aa
Description	Enables RNA binding activity. Predicted to be involved in eukaryotic translation initiation factor 4F complex assembly and formation of translation preinitiation complex. Located in cytosol. Biomarker of autism spectrum disorder and major depressive disorder. Required for the binding of mRNA to ribosomes. Functions in close association with EIF4-F and EIF4-A. Binds near the 5'-terminal cap of mRNA in presence of EIF-4F and ATP. Promotes the ATPase activity and the ATP-dependent RNA unwinding activity of both EIF4-A and EIF4-F.
Tag	C-His
Molecular Mass	25.5 kDa
Endotoxin	Less than 1.0 EU/μg by the LAL method.
Purity	>95% as determined by SDS-PAGE.

 Tel: 1-631-559-9269 1-516-512-3133

 Email: info@creative-biomart.com  Fax: 1-631-938-8127

 45-1 Ramsey Road, Shirley, NY 11967, USA

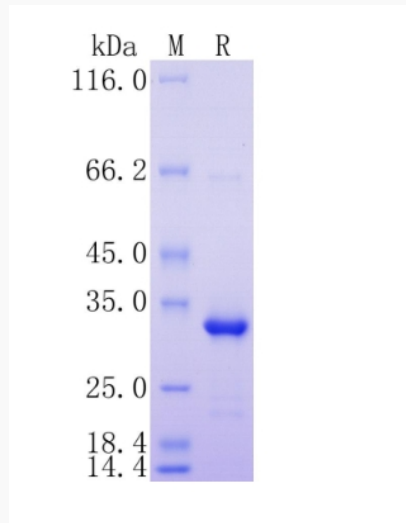
Storage	Please avoid repeated freeze-thaw cycles. Samples are stable for up to twelve months from date of receipt at -20 to -80 centigrade. It is recommended that aliquot the reconstituted solution to minimize freeze-thaw cycles.
Storage Buffer	Lyophilized from a 0.2 µm filtered solution of PBS, pH7.4, 5% Trehalose, 5% mannitol.
Reconstitution	Reconstitute at 250 µg/mL in sterile water.
GENE INFORMATION	
Gene Name	EIF4B eukaryotic translation initiation factor 4B [Homo sapiens (human)]
Official Symbol	EIF4B
Synonyms	EIF4B; eukaryotic translation initiation factor 4B; EIF-4B; PRO1843;
Gene ID	1975
mRNA Refseq	NM_001417
Protein Refseq	NP_001408
MIM	603928
UniProt ID	P23588

 Tel: 1-631-559-9269 1-516-512-3133

 Email: info@creative-biomart.com  Fax: 1-631-938-8127

 45-1 Ramsey Road, Shirley, NY 11967, USA

**Protein on SDS-
PAGE under
reducing (R)
condition.**



 Tel: 1-631-559-9269 1-516-512-3133

 Email: info@creative-biomart.com  Fax: 1-631-938-8127

 45-1 Ramsey Road, Shirley, NY 11967, USA