

## Recombinant Human EIF4E Protein (Met1-Ile118), N-His tagged

Cat. No. EIF4E-2054H Lot. No. (See product label)

### SPECIFICATION

<b>Product Overview</b>	Recombinant human EIF4E (Met1-Ile118) fused with N-terminal His tag was expressed in E. coli.
<b>Species</b>	Human
<b>Source</b>	E.coli
<b>ProteinLength</b>	Met1-Ile118
<b>Form</b>	Lyophilized powder/frozen liquid
<b>Molecular Mass</b>	12.98 kDa
<b>Purity</b>	>90% as determined by SDS-PAGE
<b>Notes</b>	For research use only.
<b>Storage</b>	Use a manual defrost freezer and avoid repeated freeze thaw cycles. Store at 2 to 8 centigrade for one week. Store at -20 to -80 centigrade for twelve months from the date of receipt.
<b>Storage Buffer</b>	Supplied as solution form in PBS or lyophilized from PBS.
<b>Reconstitution</b>	Reconstitute in sterile water for a stock solution.

 Tel: 1-631-559-9269 1-516-512-3133

 Email: [info@creative-biomart.com](mailto:info@creative-biomart.com)  Fax: 1-631-938-8127

 45-1 Ramsey Road, Shirley, NY 11967, USA

**Shipping**

They are shipped out with dry ice/blue ice unless customers require otherwise.

**GENE INFORMATION****Gene Name**

EIF4E eukaryotic translation initiation factor 4E [ Homo sapiens (human) ]

**Official Symbol**

EIF4E

**Synonyms**

EIF4E; eukaryotic translation initiation factor 4E; EIF4EL1, EIF4F; EIF4E1; eIF-4E; eIF-4F 25 kDa subunit; mRNA cap-binding protein; eukaryotic translation initiation factor 4E-like 1; CBP; EIF4F; EIF4EL1; MGC111573;

**Gene ID**

1977

**mRNA Refseq**

NM\_001130678

**Protein Refseq**


NP\_001124150

**MIM**

133440

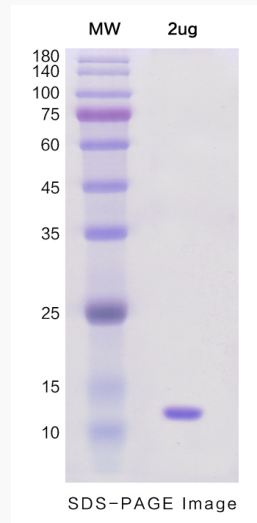
**UniProt ID**

P06730

 Tel: 1-631-559-9269 1-516-512-3133 Email: [info@creative-biomart.com](mailto:info@creative-biomart.com)  Fax: 1-631-938-8127 45-1 Ramsey Road, Shirley, NY 11967, USA



SDS-PAGE



Tel: 1-631-559-9269 1-516-512-3133

Email: [info@creative-biomart.com](mailto:info@creative-biomart.com) Fax: 1-631-938-8127

45-1 Ramsey Road, Shirley, NY 11967, USA