

# Recombinant Human EIF4E Protein, Myc/DDK-tagged, C13 and N15-labeled

**Cat. No.** EIF4E-2922H    **Lot. No.** (See product label)

## SPECIFICATION

### Product Overview

EIF4E MS Standard C13 and N15-labeled recombinant protein (NP\_001959) with a C-terminal MYC/DDK tag, was expressed in HEK293 cells.

### Species

Human

### Source

HEK293

### Description

The protein encoded by this gene is a component of the eukaryotic translation initiation factor 4F complex, which recognizes the 7-methylguanosine cap structure at the 5' end of messenger RNAs. The encoded protein aids in translation initiation by recruiting ribosomes to the 5'-cap structure. Association of this protein with the 4F complex is the rate-limiting step in translation initiation. This gene acts as a proto-oncogene, and its expression and activation is associated with transformation and tumorigenesis. Several pseudogenes of this gene are found on other chromosomes. Alternative splicing results in multiple transcript variants.

### Molecular Mass

25.1 kDa

### AA Sequence

MATVEPETTPTPNPPTTEEEKTESNQEVANPEHYIKHPLQNRWALWFFKNDKSKTW  
 QANLRLISKFDTVEDFWALYNHIQLSSNLMPGCDYSLFKDGIEMWEDEKNKRGR  
 WLITLNKQRRSDLDRFWLETLLCLIGESFDDYSDDVCGAVVNVRAKGDKIAIWTE  
 CENREAVTHIGRVYKERLGLPPKIVIGYQSHADTATKSGSTTKNRFVTRTRPLEQKL  
 ISEEDLAANDILDYKDDDDKV

 Tel: 1-631-559-9269    1-516-512-3133

 Email: [info@creative-biomart.com](mailto:info@creative-biomart.com)     Fax: 1-631-938-8127

 45-1 Ramsey Road, Shirley, NY 11967, USA

<b>Purity</b>	> 80% as determined by SDS-PAGE and Coomassie blue staining
<b>Stability</b>	Stable for 3 months from receipt of products under proper storage and handling conditions.
<b>Storage</b>	Store at -80 centigrade. Avoid repeated freeze-thaw cycles.
<b>Concentration</b>	50 µg/mL as determined by BCA
<b>Storage Buffer</b>	100 mM glycine, 25 mM Tris-HCl, pH 7.3.

## GENE INFORMATION

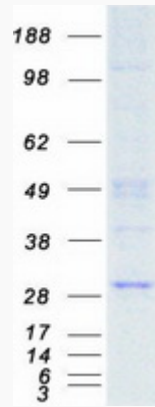
<b>Gene Name</b>	EIF4E eukaryotic translation initiation factor 4E [ Homo sapiens (human) ]
<b>Official Symbol</b>	EIF4E
<b>Synonyms</b>	EIF4E; eukaryotic translation initiation factor 4E; EIF4EL1, EIF4F; EIF4E1; eIF-4E; eIF-4F 25 kDa subunit; mRNA cap-binding protein; eukaryotic translation initiation factor 4E-like 1; CBP; EIF4F; EIF4EL1; MGC111573;
<b>Gene ID</b>	1977
<b>mRNA Refseq</b>	NM_001968
<b>Protein Refseq</b>	NP_001959
<b>MIM</b>	133440
<b>UniProt ID</b>	P06730

 Tel: 1-631-559-9269 1-516-512-3133

 Email: [info@creative-biomart.com](mailto:info@creative-biomart.com)  Fax: 1-631-938-8127

 45-1 Ramsey Road, Shirley, NY 11967, USA

SDS-PAGE



 Tel: 1-631-559-9269 1-516-512-3133

 Email: [info@creative-biomart.com](mailto:info@creative-biomart.com)  Fax: 1-631-938-8127

 45-1 Ramsey Road, Shirley, NY 11967, USA