

## Recombinant Human EIF4E Protein, GST-tagged

Cat. No. EIF4E-3198H Lot. No. (See product label)

### SPECIFICATION

<b>Product Overview</b>	Human EIF4E full-length ORF ( AAH12611, 1 a.a. - 217 a.a.) recombinant protein with GST-tag at N-terminal.
<b>Species</b>	Human
<b>Source</b>	Wheat Germ
<b>Description</b>	The protein encoded by this gene is a component of the eukaryotic translation initiation factor 4F complex, which recognizes the 7-methylguanosine cap structure at the 5' end of messenger RNAs. The encoded protein aids in translation initiation by recruiting ribosomes to the 5'-cap structure. Association of this protein with the 4F complex is the rate-limiting step in translation initiation. This gene acts as a proto-oncogene, and its expression and activation is associated with transformation and tumorigenesis. Several pseudogenes of this gene are found on other chromosomes. Alternative splicing results in multiple transcript variants. [provided by RefSeq, Sep 2015]
<b>Molecular Mass</b>	49.61 kDa
<b>AA Sequence</b>	MATVEPETTPTPNPPTTEEEKTESNQEVANPEHYIKHPLQNRWALWFFKNDKSKTW QANLRLISKFDTVEDFWALYNHIQLSSNLMPGCDYSLFKDGIEMWEDEKNKRGR WLITLNKQRRSDLNRFWLETLLCLIGESFDDYSDDVCGAVVNVRAKGDKIAIWTE CENREAVTHIGRVYKERLGLPPKIVIGYQSHADTATKSGSTTKNRFV
<b>Applications</b>	Enzyme-linked Immunoabsorbent Assay

 Tel: 1-631-559-9269 1-516-512-3133

 Email: [info@creative-biomart.com](mailto:info@creative-biomart.com)  Fax: 1-631-938-8127

 45-1 Ramsey Road, Shirley, NY 11967, USA

Western Blot (Recombinant protein)  
 Antibody Production  
 Protein Array

<b>Notes</b>	Best use within three months from the date of receipt of this protein.
<b>Storage</b>	Store at -80 centigrade. Aliquot to avoid repeated freezing and thawing.
<b>Storage Buffer</b>	50 mM Tris-HCl, 10 mM reduced Glutathione, pH=8.0 in the elution buffer.

## GENE INFORMATION

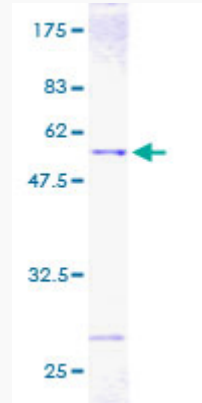
<b>Gene Name</b>	EIF4E eukaryotic translation initiation factor 4E [ Homo sapiens ]
<b>Official Symbol</b>	EIF4E
<b>Synonyms</b>	EIF4E; eukaryotic translation initiation factor 4E; EIF4EL1, EIF4F; EIF4E1; eIF-4E; eIF-4F 25 kDa subunit; mRNA cap-binding protein; eukaryotic translation initiation factor 4E-like 1; CBP; EIF4F; EIF4EL1; MGC111573;
<b>Gene ID</b>	1977
<b>mRNA Refseq</b>	NM_001130678
<b>Protein Refseq</b>	NP_001124150
<b>MIM</b>	133440
<b>UniProt ID</b>	P06730

 Tel: 1-631-559-9269 1-516-512-3133

 Email: [info@creative-biomart.com](mailto:info@creative-biomart.com)  Fax: 1-631-938-8127

 45-1 Ramsey Road, Shirley, NY 11967, USA

**Quality Control  
Testing**



12.5% SDS-PAGE Stained with Coomassie Blue.

 Tel: 1-631-559-9269 1-516-512-3133

 Email: [info@creative-biomart.com](mailto:info@creative-biomart.com)  Fax: 1-631-938-8127

 45-1 Ramsey Road, Shirley, NY 11967, USA