

Recombinant Human EIF4E Protein Complexed With EIF4G (1-217), N-His tagged

Cat. No. EIF4E-40H Lot. No. (See product label)

SPECIFICATION

Product Overview Recombinant human EIF4E is expressed in E. coli as a single, non-glycosylated polypeptide chain containing 237 amino acids, EIF4E (1-217 a.a.) with a N-terminal His-Tag. A fragment of 80 residues of EIF4G containing EIF4E binding domain is co-expressed with EIF4E. The binary complex is well purified by affinity, ion exchange and gel filtration chromatographic techniques.

Species Human

Source E.coli

ProteinLength 1-217 a.a.

Description Enables SUMO-specific isopeptidase activity. Involved in G2/M transition of mitotic cell cycle and protein desumoylation. Located in nuclear envelope and nucleolus. Orthologous to several human genes including SENP1 (SUMO specific peptidase 1) and SENP2 (SUMO specific peptidase 2).

Molecular Mass EIF4E: 27.3 kDa; EIF4G: 9.0 kDa

AA Sequence Full length EIF4E: MGSSHHHHHHSSGLVPRGSHMATVEPETTPTPNPPTTEEEKTE
SNQEVANPEHYIKHPLQNRWALWFFKNDKSKTWQANLRLISKFDTVEDFWALYNHI
QLSSNLMPGCDYSLFKDGI EPMWEDEKNKRGRWLITLNKQRRSDLDRFWLETL
LCLIGESFDDYSDDVCGAVVNR AKGDKIAIWTTECENREAVTHIGRVYKERLGLPP
KIVIGYQSHADTATKSGSTTKNRFVV

 Tel: 1-631-559-9269 1-516-512-3133

 Email: info@creative-biomart.com  Fax: 1-631-938-8127

 45-1 Ramsey Road, Shirley, NY 11967, USA

	EIF4G fragment: MWDSKEDIHNAENIQPGEQKYEYKSDQWKPPNLEEKKRYDREF LLGFQFIFASMQKPEGLPHISDVVLDKANKT
Purity	> 98% by SDS-PAGE
Usage	It is great to use on binding assay, small molecule inhibitor screening, crystallization/c o-crystallization and apply as substrate of MNK1,2 or other kinase
Storage	>12 months at -80 centigrade, stable for 2-4 weeks at 4 centigrade, avoid multiple freeze-thaw cycles.
Concentration	0.5 mg/mL
Storage Buffer	eIF4E/eIF4G with 2 mM DTT, 10% glycerol, 0.02% NaN ₃ , 150 mM NaCl , 50 mM Tris-HCl pH7.5.

GENE INFORMATION

Gene Name	EIF4E eukaryotic translation initiation factor 4E [Homo sapiens (human)]
Official Symbol	EIF4E
Synonyms	EIF4E; eukaryotic translation initiation factor 4E; EIF4EL1, EIF4F; EIF4E1; eIF-4E; eIF-4F 25 kDa subunit; mRNA cap-binding protein; eukaryotic translation initiation factor 4E-like 1; CBP; EIF4F; EIF4EL1; MGC111573;
Gene ID	1977
mRNA Refseq	NM_001130678
Protein Refseq	NP_001124150

 Tel: 1-631-559-9269 1-516-512-3133

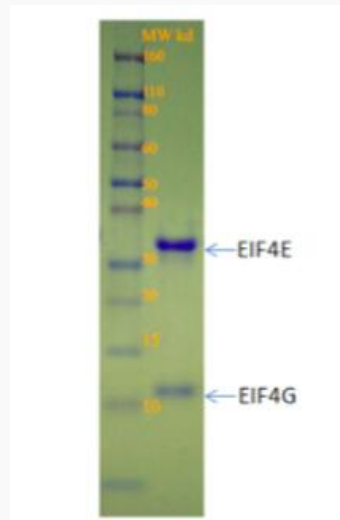
 Email: info@creative-biomart.com  Fax: 1-631-938-8127

 45-1 Ramsey Road, Shirley, NY 11967, USA

MIM 133440

UniProt ID P06730

SDS-PAGE



 Tel: 1-631-559-9269 1-516-512-3133

 Email: info@creative-biomart.com  Fax: 1-631-938-8127

 45-1 Ramsey Road, Shirley, NY 11967, USA