

Recombinant Human EIF4E2 protein, Myc/DDK-tagged

Cat. No. EIF4E2-01H Lot. No. (See product label)

SPECIFICATION

Product Overview Recombinant Human EIF4E2 protein, fused to Myc/DDK-tag, was expressed in HEK293T. Protein Families: Transcription Factors. Protein Pathways: Insulin signaling pathway, mTOR signaling pathway.

Species Human

Source HEK293

Description Recognizes and binds the 7-methylguanosine-containing mRNA cap during an early step in the initiation. Acts as a repressor of translation initiation. In contrast to EIF4E, it is unable to bind eIF4G (EIF4G1, EIF4G2 or EIF4G3), suggesting that it acts by competing with EIF4E and block assembly of eIF4F at the cap (By similarity).

Form 25 mM Tris.HCl, pH 7.3, 100 mM glycine, 10% glycerol.

Molecular Mass 28.2 kDa

Product-Related Proteins

- TA50011-100
- LC401518
- RC201391
- LC401518
- TA502403
- RC201391

 Tel: 1-631-559-9269 1-516-512-3133

 Email: info@creative-biomart.com  Fax: 1-631-938-8127

 45-1 Ramsey Road, Shirley, NY 11967, USA

Purity	> 80%
Usage	Recombinant protein was captured through anti-DDK affinity column followed by conventional chromatography steps.
Stability	Stable for 12 months from the date of receipt of the product under proper storage and handling conditions. Avoid repeated freeze-thaw cycles.
Storage	Store at -80 centigrade.
Concentration	>50 ug/mL

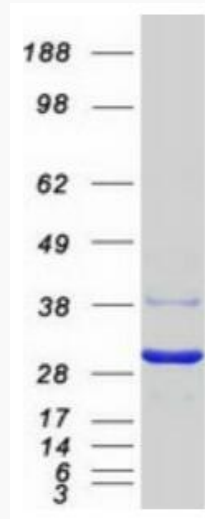
GENE INFORMATION

Gene Name	EIF4E2 eukaryotic translation initiation factor 4E family member 2 [Homo sapiens (human)]
Official Symbol	EIF4E2
Synonyms	4E-LP; 4EHP; EIF4EL3; h4EHP; IF4e
Gene ID	9470
mRNA Refseq	NM_004846.4
Protein Refseq	NP_004837.1
MIM	605895
UniProt ID	O60573

 Tel: 1-631-559-9269 1-516-512-3133

 Email: info@creative-biomart.com  Fax: 1-631-938-8127

 45-1 Ramsey Road, Shirley, NY 11967, USA



Coomassie blue staining of purified EIF4E2 protein. The protein was produced from HEK293T cells transfected with EIF4E2 cDNA clone using MegaTran 2.0.

Tel: 1-631-559-9269 1-516-512-3133

Email: info@creative-biomart.com Fax: 1-631-938-8127

45-1 Ramsey Road, Shirley, NY 11967, USA