

## Recombinant Human EIF4E2 protein, His-tagged

Cat. No. EIF4E2-155H Lot. No. (See product label)

### SPECIFICATION

<b>Product Overview</b>	Recombinant Human EIF4E2 protein(O60573)(1-245aa), fused with C-terminal His tag, was expressed in E.coli.
<b>Species</b>	Human
<b>Source</b>	E.coli
<b>ProteinLength</b>	1-245aa
<b>Form</b>	If the delivery form is liquid, the default storage buffer is Tris/PBS-based buffer, 5%-50% glycerol. If the delivery form is lyophilized powder, the buffer before lyophilization is Tris/PBS-based buffer, 6% Trehalose, pH 8.0.
<b>Molecular Mass</b>	35.3 kDa
<b>AASequence</b>	MNNKFDALKDDDDSGDHDQNEENSTQKDGEEKTERDKNQSSSKRKAVVPGPAEH PLQYNYTFWYSRRTPGRPTSSQSIEQNIKQIGTFASVEQFWRWFYSHMVRPGDLTG HSDFHFLFKEGIKPMWEDDANKNGGKWIIRLRKGLASRCWENLILAMLGEQFMVGEEI CGAVVSVRFQEDIISIWNKTASDQATTARIRDTLRRVNLNLPNTIMEYKTHHTDSIKMP GRLGPQRLLFQNLWKPRLNVP
<b>Purity</b>	Greater than 90% as determined by SDS-PAGE.
<b>Storage</b>	Store at -20°C/-80°C upon receipt, aliquoting is necessary for mutiple use. Avoid repeated freeze-thaw cycles.

 Tel: 1-631-559-9269 1-516-512-3133

 Email: [info@creative-biomart.com](mailto:info@creative-biomart.com)  Fax: 1-631-938-8127

 45-1 Ramsey Road, Shirley, NY 11967, USA

**Reconstitution**

We recommend that this vial be briefly centrifuged prior to opening to bring the contents to the bottom. Please reconstitute protein in deionized sterile water to a concentration of 0.1-1.0 mg/mL. We recommend to add 5-50% of glycerol (final concentration) and aliquot for long-term storage at -20°C/-80°C.

**GENE INFORMATION**

**Gene Name** EIF4E2 eukaryotic translation initiation factor 4E family member 2 [ Homo sapiens ]

**Official Symbol** EIF4E2

**Synonyms**

EIF4E2; eukaryotic translation initiation factor 4E family member 2; EIF4EL3, eukaryotic translation initiation factor 4E like 3; eukaryotic translation initiation factor 4E type 2; 4EHP; IF4e; eIF4E type 2; eIF-4E type 2; eIF4E-like protein 4E-LP; mRNA cap-binding protein 4EHP; eIF4E-like cap-binding protein; mRNA cap-binding protein type 3; eukaryotic translation initiation factor 4E-like 3; eukaryotic translation initiation factor 4E member 2; eukaryotic translation initiation factor 4E homologous protein; 4E-LP; EIF4EL3;

**Gene ID** 9470

**mRNA Refseq** NM\_004846

**Protein Refseq** NP\_004837

**MIM** 605895

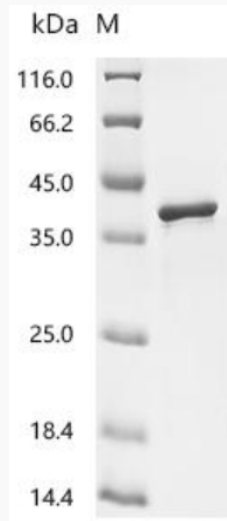
**UniProt ID** O60573

 Tel: 1-631-559-9269 1-516-512-3133

 Email: [info@creative-biomart.com](mailto:info@creative-biomart.com)  Fax: 1-631-938-8127

 45-1 Ramsey Road, Shirley, NY 11967, USA

**SDS-PAGE**



 Tel: 1-631-559-9269 1-516-512-3133

 Email: [info@creative-biomart.com](mailto:info@creative-biomart.com)  Fax: 1-631-938-8127

 45-1 Ramsey Road, Shirley, NY 11967, USA