

Active Recombinant Full Length Human EIF4EBP1 Protein, GST-tagged

Cat. No. EIF4EBP1-9243HF **Lot. No.** (See product label)

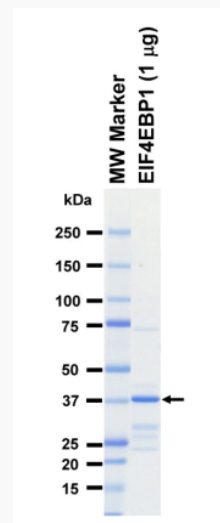
SPECIFICATION

Product Overview	Full-length human EIF4EBP1 [1-118(end) amino acids of accession number NP_004086.1] was expressed as N-terminal GST-fusion protein (39 kDa) using E.coli expression system. GST-EIF4EBP1 was purified by using glutathione sepharose chromatography
Species	Human
Source	E.coli
ProteinLength	1-118(end)
Form	50 mM Tris-HCl, 150 mM NaCl, 0.05% Brij35, 1 mM DTT, 10% glycerol, pH7.5
Bio-activity	The phosphorylational ability of the protein was determined by ELISA. The substrate protein was incubated with the indicated enzyme. Phosphorylation was detected by anti-phospho antibody and HRPlabeled anti-rabbit IgG (or HRP-labeled anti-mouse IgG).
Purity	65%
Applications	SDS-PAGE
Storage	Store at -80C. Avoid repeating freeze-thaws.

 Tel: 1-631-559-9269 1-516-512-3133

 Email: info@creative-biomart.com  Fax: 1-631-938-8127

 45-1 Ramsey Road, Shirley, NY 11967, USA

GENE INFORMATION**Gene Name** eukaryotic translation initiation factor 4E binding protein 1**Official Symbol** EIF4EBP1**Synonyms** BP-1; 4EBP1; 4E-BP1; PHAS-I**Protein Refseq** [NP_004086.1](#)**UniProt ID** [Q13541](#)**SDS-PAGE**

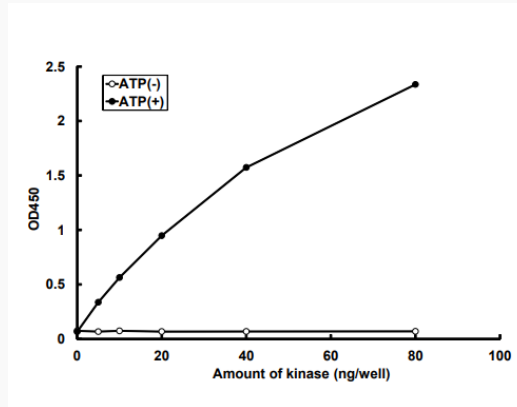
The purity was assessed by SDS-PAGE/CBB staining.

 Tel: 1-631-559-9269 1-516-512-3133

 Email: info@creative-biomart.com  Fax: 1-631-938-8127

 45-1 Ramsey Road, Shirley, NY 11967, USA

Activity data



The phosphorylational ability of the protein was determined by ELISA. The substrate protein was incubated with the indicated enzyme. Phosphorylation was detected by anti-phospho antibody and HRPlabeled anti-rabbit IgG (or HRP-labeled anti-mouse IgG).

Tel: 1-631-559-9269 1-516-512-3133

Email: info@creative-biomart.com Fax: 1-631-938-8127

45-1 Ramsey Road, Shirley, NY 11967, USA