

Recombinant Human EIF4EBP3 Protein, Myc/DDK-tagged, C13 and N15-labeled

Cat. No. EIF4EBP3-3889H **Lot. No.** (See product label)

SPECIFICATION

Product Overview	EIF4EBP3 MS Standard C13 and N15-labeled recombinant protein (NP_003723) with a C-terminal MYC/DDK tag, was expressed in HEK293 cells.
Species	Human
Source	HEK293
Description	<p>This gene encodes a member of the EIF4EBP family, which consists of proteins that bind to eukaryotic translation initiation factor 4E and regulate its assembly into EIF4F, the multi-subunit translation initiation factor that recognizes the mRNA cap structure. Read-through transcription from the neighboring upstream gene (MASK or ANKHD1) generates a transcript (MASK-BP3) that encodes a protein comprised of the MASK protein sequence for the majority of the protein and a different C-terminus due to an alternate reading frame for the EIF4EBP3 segments.</p>
Molecular Mass	10.9 kDa
AA Sequence	MSTSTSCPIPGGRDQLPDCYSTTPGGTLYATTPGGTRIIYDRKFLLECKNSPIARTPP CCLPQIPGVTTPTAPLSKLEELKEQETEEEIPDDAQFEMDITRTRPLEQKLISEEDLA ANDILDYKDDDDKV
Purity	> 80% as determined by SDS-PAGE and Coomassie blue staining
Stability	Stable for 3 months from receipt of products under proper storage and handling

 Tel: 1-631-559-9269 1-516-512-3133

 Email: info@creative-biomart.com  Fax: 1-631-938-8127

 45-1 Ramsey Road, Shirley, NY 11967, USA

conditions.

Storage Store at -80 centigrade. Avoid repeated freeze-thaw cycles.

Concentration 50 µg/mL as determined by BCA

Storage Buffer 100 mM glycine, 25 mM Tris-HCl, pH 7.3.

GENE INFORMATION

Gene Name EIF4EBP3 eukaryotic translation initiation factor 4E binding protein 3 [Homo sapiens (human)]

Official Symbol EIF4EBP3

Synonyms EIF4EBP3; eukaryotic translation initiation factor 4E binding protein 3; eukaryotic translation initiation factor 4E-binding protein 3; 4E BP3; eIF4E-binding protein 3; eukaryotic initiation factor 4E-binding protein 3; 4EBP3; 4E-BP3;

Gene ID 8637

mRNA Refseq NM_003732

Protein Refseq NP_003723

MIM 603483

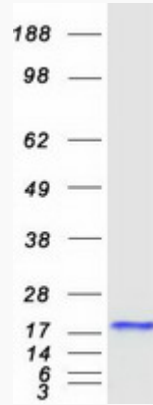
UniProt ID O60516

 Tel: 1-631-559-9269 1-516-512-3133

 Email: info@creative-biomart.com  Fax: 1-631-938-8127

 45-1 Ramsey Road, Shirley, NY 11967, USA

SDS-PAGE



 Tel: 1-631-559-9269 1-516-512-3133

 Email: info@creative-biomart.com  Fax: 1-631-938-8127

 45-1 Ramsey Road, Shirley, NY 11967, USA