

Recombinant Full Length Human EIF4G1 Protein, C-Flag-tagged

Cat. No. EIF4G1-1009HFL **Lot. No.** (See product label)

SPECIFICATION

Product Overview	Recombinant Full Length Human EIF4G1 Protein, fused to Flag-tag at C-terminus, was expressed in Mammalian cells.
Species	Human
Source	Mammalian Cells
Description	The protein encoded by this gene is a component of the multi-subunit protein complex EIF4F. This complex facilitates the recruitment of mRNA to the ribosome, which is a rate-limiting step during the initiation phase of protein synthesis. The recognition of the mRNA cap and the ATP-dependent unwinding of 5'-terminal secondary structure is catalyzed by factors in this complex. The subunit encoded by this gene is a large scaffolding protein that contains binding sites for other members of the EIF4F complex. A domain at its N-terminus can also interact with the poly(A)-binding protein, which may mediate the circularization of mRNA during translation. Alternative splicing results in multiple transcript variants, some of which are derived from alternative promoter usage.
Form	25 mM Tris HCl, pH 7.3, 100 mM glycine, 10% glycerol.
Molecular Mass	175.3 kDa
AA Sequence	MNKAPQSTGPPPAPSPGLPQPAFPPGQTAPVVFSTPQATQMNTPSQPRQHFYPSR AQPPSSAASRVQSAA PARPGPAAHVYPAGSQVMMIPSQISYPASQGAYYIPGQGR

 Tel: 1-631-559-9269 1-516-512-3133

 Email: info@creative-biomart.com  Fax: 1-631-938-8127

 45-1 Ramsey Road, Shirley, NY 11967, USA

STYVVPTQQYPVQPGAPGFYPGASPTEFGT YAGAYYPAQGVQQFPTGVAPAPVLM
NQPPQIAPKRERTIRIRDPNQGGKDITEEIMSGARTASTPTPPQ TGGGLEPQANGE
TPQVAVIVRPDDRSQGAIIADRPGLPGPEHSPSESQPSSPSPTPSPSPVLEPGSEPN
L AVLSIPGDTMTTIQMSVEESTPISRETGEPYRLSPEPTPLAEPILVEVTLSPVPES
EFSSSPLQAPT LASHTVEIHEPNMVPSEDLPEVESSPELAPPPACPSESPVPIA
PTAQPEELLNGAPSPPAVDLSPVSE PEEQAKEVTASMAPPTIPSATPATAPSATSPA
QEEEMEEEEEEGEAGEAGEAESEKGGEE LLPPESTP IPANLSQNLEAAAATQVA
VSVPKRRRKIKELNKKEAVGDLLDAFKEANPAVPEVENQPPAGSNPGPESEG SGVP
PRPEEADETWDSKEDIHNAENIQPGEQKYEYKSDQWKPLNLEEKRYDREFLLGF
QFIFASMQKP EGLPHISDVLDKANKTPLRPLDPTLQGINCGPDFTPSFANLGRRT
LSTRGPPRGGPGGELPRGPAGLG PRRSQQGRKEPRKIIATVLMTEDIKLNKA EKA
WKPSSKRTAADKDRGEEDADGSKTQDLFRRVRSILNK LTPQMFQQLMKQVTQLAI
DTEERLKGVIDLIFEKAISEPNFSVAYANMCRCLMALKVPTTEKPTVTNFR KLLNLR
CQKEFEKDKDDDEVFEKKQKEMDEAATAERGRLEEELEARDIARRRSLGNIKFIG
ELFKLKM LTEAIMHDCVVKLLKNHDEESLECLCRLTTIGKDLDFEKAKPRMDQYFN
QMEKIIKEKKTSSRIRFMLQ DVLDLRGSNWVPRRGDQGPKTIDQIHKEAEMEEHRE
HIKVQQLMAKGS DKRRGGPPGPPISRGLPLVDDG GWNTVPISKGSRPIDTSRLTKIT
KPGSIDSNNQLFAPGGRLSWGKGSSGSGAKPSDAASEAARPATSTL NRFSALQQ
AVPTESTDNRRVVQRSSLSRERGEKAGDRGDRLEERSERGGDRGDRLD RARTPATK
RSFSKEV EERSRERPSQPEGLRKAASLTEDRDRGRDAVKREAAALPPV SPLKAALSE
EELEKSKAII EYLHLNDMK EAVQCVQELASPSLLFIFVRHGVESTLERSAIAREHM
GQLLHQLLCAGHLSTAQYYQGLYEILELAEDME IDIPHVWLYLAELVTPILQEGGVPM
GELFREITKPLRPLGKAASLLEILGLLCKSMGPKKVGTLWREAG LSWKEFLPEGQD
IGAFVAEQKVEYTLGEESEAPGQRALPSEELNRQLEKLLKEGSSNQRVFDWIEANLS
E QQIVSNTLVRALMTAVCYSAIIFETPLRVDVAVLKARAKLLQKYLCDEQKELQALYA
LQALVVTLEQPPN
LLRMFFDALYDEDVVKEDAFYSWESSKDPAEQQGKGVALKSVTAFFKWLREAEES
DHNTRTRPLEQKLISEEDLAANDILDYKDDDDKV

Purity

> 80% as determined by SDS-PAGE and Coomassie blue staining.

 Tel: 1-631-559-9269 1-516-512-3133 Email: info@creative-biomart.com  Fax: 1-631-938-8127 45-1 Ramsey Road, Shirley, NY 11967, USA

Stability	Stable for 12 months from the date of receipt of the product under proper storage and handling conditions. Avoid repeated freeze-thaw cycles.
Storage	Store at -80 centigrade.
Concentration	>50 ug/mL as determined by microplate BCA method.
Preparation	Recombinant protein was captured through anti-DDK affinity column followed by conventional chromatography steps.
Protein Pathways	Viral myocarditis
Full Length	Full L.

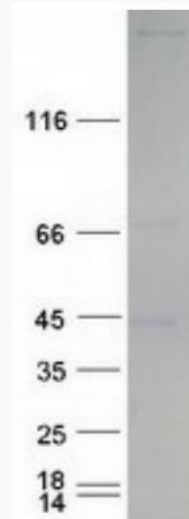
GENE INFORMATION

Gene Name	EIF4G1 eukaryotic translation initiation factor 4 gamma 1 [Homo sapiens (human)]
Official Symbol	EIF4G1
Synonyms	P220; EIF4F; EIF4G; EIF4GI; PARK18; EIF-4G1
Gene ID	1981
mRNA Refseq	NM_198241.3
Protein Refseq	NP_937884.2
MIM	600495
UniProt ID	Q04637

 Tel: 1-631-559-9269 1-516-512-3133

 Email: info@creative-biomart.com  Fax: 1-631-938-8127

 45-1 Ramsey Road, Shirley, NY 11967, USA



Coomassie blue staining of purified EIF4G1 protein.

 Tel: 1-631-559-9269 1-516-512-3133

 Email: info@creative-biomart.com  Fax: 1-631-938-8127

 45-1 Ramsey Road, Shirley, NY 11967, USA