

Recombinant Human EIF4G1 Protein, Myc/DDK-tagged, C13 and N15-labeled

Cat. No. EIF4G1-5398H **Lot. No.** (See product label)

SPECIFICATION

Product Overview	EIF4G1 MS Standard C13 and N15-labeled recombinant protein (NP_937884) with a C-terminal MYC/DDK tag, was expressed in HEK293 cells.
Species	Human
Source	HEK293
Description	The protein encoded by this gene is a component of the multi-subunit protein complex EIF4F. This complex facilitates the recruitment of mRNA to the ribosome, which is a rate-limiting step during the initiation phase of protein synthesis. The recognition of the mRNA cap and the ATP-dependent unwinding of 5'-terminal secondary structure is catalyzed by factors in this complex. The subunit encoded by this gene is a large scaffolding protein that contains binding sites for other members of the EIF4F complex. A domain at its N-terminus can also interact with the poly(A)-binding protein, which may mediate the circularization of mRNA during translation. Alternative splicing results in multiple transcript variants, some of which are derived from alternative promoter usage.
Molecular Mass	175.3 kDa
AA Sequence	MNKAPQSTGPPPAPSPGLPQPAFPPGQTAPVVVFSTPQATQMNTPSQPRQHFYPSR AQPPSSAASRVQSAAPARPGPAAHVYPAGSQVMMIPSQISYPASQGAYYIPGQGRS TYVVPTQQYPVQPGAPGFYPGASPTTEFGTYAGAYYPAQGVQQFPTGVAPAPVLMN

 Tel: 1-631-559-9269 1-516-512-3133

 Email: info@creative-biomart.com  Fax: 1-631-938-8127

 45-1 Ramsey Road, Shirley, NY 11967, USA

QPPQIAPKRERKTIRIRDPNQGGKDITEEIMSGARTASTPTPPQTGGGLEPQANGET
 PQVAVIVRPDDRSQGAIIADRPGLPGPEHSPSESQPSSPSPTSPSPVLEPGSEPNL
 AVLSIPGDTMTTIQMSVEESTPISRETGEPYRLSPEPTPLAEPILVEVTLSKVPPESE
 FSSSPLQAPTPLASHTVEIHEPNGMVPSLEPEVESSPELAPPPACPSESPVPIAPT
 AQPEELLNGAPSPPAVDLSPVSEPEEQAKEVTASMAPPTIPSATPATAPSATSPAQE
 EEEEEEEEEEGEAGEAGEAESEKGGEE LLPPESTPIPANLSQNLEAAAATQVAVS
 VPKRRRKIKELNKKEAVGDLLDAFKEANPAVPEVENQPPAGSNPGPESEGSGVPPR
 PEEADETWDSKEDIHNAENIQPGEQKYEYKSDQWKPLNLEEKRYDREFLGQFI
 FASMQKPEGLPHISDVVLDKANKTPLRPLDPTLRLQGINCGPDFTPSFANLGRITLST
 RGPGRGGPGGELPRGPAGLGP RR SQGPRKEPRKIIATVLMTEDIKLNKAEKAWKP
 SSKRTAADKDRGEEDADGSKTQDLFRRVRSILNKLTPQMFQQLMKQVTQLAIDTEE
 RLKGVIDLIFEKAISEPNFSVAYANMCRCLMALKVPTTEKPTVTVNFRKLLLNRCQKE
 FEKDKDDDEVFEKKQKEMDEAATAEERGLKEELEEARDIARRRSLGNIKFIGELFKL
 KMLTEAIMHDCVVKLLKNHDEESLECLCRLTTIGKDLDFEKAKPRMDQYFNQMEKII
 KEKKTSSRIRFMLQDVLDLRGSNWVPRRGDQGPKTIDQIHKEAEMEEHREHIKVQQ
 LMAKGS DKRRGGPPGPPISRGLPLVDDGGWNTVPISKGSRPIDTSRLTKITKPGSID
 SNNQLFAPGGRLSWGKSSGGSGAKPSDAASEAARPATSTLNRFSALQQAVPTES
 TDNRRVVQRSSLSRERGEKAGDRGDRRLERSERGGDRGDRDRARTPATKRSFSK
 EVEERSRERPSQPEGLRKAASLTEDRDRGRDAVKREAAALPPVSPLKAALSEEELEK
 KSKAIIIEYLHLNDMKEAVQCVQELASPSLLFIFVRHGVESTLERSAIAREHMGQLLH
 QLLCAGHLSTAQYYQGLYEILELAEDMEIDIPHVWLYLAELVTPILQEGGVPMGELFR
 EITKPLRPLGKAASLLLEILGLLCKSMGPKKVGTLWREAGLSWKEFLPEGQDIGAFVA
 EQKVEYTLGEESEAPGQRALPSEELNRQLEKLLKEGSSNQRVFDWIEANLSEQQIVS
 NTLVRALMTAVCYSAIIFETPLRVDVAVLKARAKLLQKYLDCDEQKELQALYALQALVV
 TLEQPPNLLRMFFDALYDEDVVKEDAFYSWESSKDPAEQQGKGVALKSVTAFFKWL
 REAEEESDHNTRTRPLEQKLISEEDLAANDILDYKDDDDKV

Purity > 80% as determined by SDS-PAGE and Coomassie blue staining

Stability Stable for 3 months from receipt of products under proper storage and handling

 Tel: 1-631-559-9269 1-516-512-3133

 Email: info@creative-biomart.com  Fax: 1-631-938-8127

 45-1 Ramsey Road, Shirley, NY 11967, USA

conditions.

Storage Store at -80 centigrade. Avoid repeated freeze-thaw cycles.

Concentration 50 µg/mL as determined by BCA

Storage Buffer 100 mM glycine, 25 mM Tris-HCl, pH 7.3.

GENE INFORMATION

Gene Name EIF4G1 eukaryotic translation initiation factor 4 gamma 1 [Homo sapiens (human)]

Official Symbol EIF4G1

Synonyms EIF4G1; eukaryotic translation initiation factor 4 gamma, 1; EIF4F, EIF4G; eukaryotic translation initiation factor 4 gamma 1; p220; EIF4-gamma; eIF-4-gamma 1; eucaryotic translation initiation factor 4G; P220; EIF4F; EIF4G; EIF4GI; PARK18; EIF-4G1; DKFZp686A1451;

Gene ID 1981

mRNA Refseq NM_198241

Protein Refseq NP_937884

MIM 600495

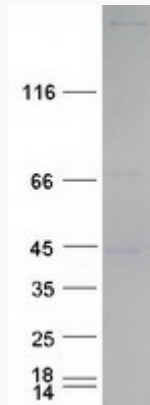
UniProt ID Q04637

 Tel: 1-631-559-9269 1-516-512-3133

 Email: info@creative-biomart.com  Fax: 1-631-938-8127

 45-1 Ramsey Road, Shirley, NY 11967, USA

SDS-PAGE



 Tel: 1-631-559-9269 1-516-512-3133

 Email: info@creative-biomart.com  Fax: 1-631-938-8127

 45-1 Ramsey Road, Shirley, NY 11967, USA