

Recombinant Human EIF4H Protein, Myc/DDK-tagged, C13 and N15-labeled

Cat. No. EIF4H-4894H **Lot. No.** (See product label)

SPECIFICATION

Product Overview	EIF4H MS Standard C13 and N15-labeled recombinant protein (NP_071496) with a C-terminal MYC/DDK tag, was expressed in HEK293 cells.
Species	Human
Source	HEK293
Description	This gene encodes one of the translation initiation factors, which functions to stimulate the initiation of protein synthesis at the level of mRNA utilization. This gene is deleted in Williams syndrome, a multisystem developmental disorder caused by the deletion of contiguous genes at 7q11.23. Alternative splicing of this gene generates 2 transcript variants.
Molecular Mass	27.2 kDa
AA Sequence	MADFDTYDDRAYSFFGGGRGSRGSAGGHGSRSQKELPTEPPYTAYVGNLPFNTV QGDIDAIFKDLIRSIVRLVRDKDTRDKFKGFCYVEFDEVDSLKEALTYDGALLGDRSLR VDIAEGRKQDKGGFGFRKGGPDDRGMSSRESRGGWDSRDDFN SGRDDFLGG RGGSRPGDRRTGPPMGSRFRDGPPLRGSNMDFREPTTEERAQRPRLQLKPRTVA TPLNQVANPNSAIFGGARPREEVVQKEQETRTRPLEQKLISEEDLAANDILDYKDDD DKV
Purity	> 80% as determined by SDS-PAGE and Coomassie blue staining

 Tel: 1-631-559-9269 1-516-512-3133

 Email: info@creative-biomart.com  Fax: 1-631-938-8127

 45-1 Ramsey Road, Shirley, NY 11967, USA

Stability	Stable for 3 months from receipt of products under proper storage and handling conditions.
Storage	Store at -80 centigrade. Avoid repeated freeze-thaw cycles.
Concentration	50 µg/mL as determined by BCA
Storage Buffer	100 mM glycine, 25 mM Tris-HCl, pH 7.3.

GENE INFORMATION

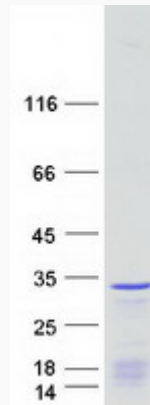
Gene Name	EIF4H eukaryotic translation initiation factor 4H [Homo sapiens (human)]
Official Symbol	EIF4H
Synonyms	EIF4H; eukaryotic translation initiation factor 4H; WBSCR1, Williams Beuren syndrome chromosome region 1; KIAA0038; WSCR1; Williams-Beuren syndrome chromosome region 1; WBSCR1; eIF-4H;
Gene ID	7458
mRNA Refseq	NM_022170
Protein Refseq	NP_071496
MIM	603431
UniProt ID	Q15056

 Tel: 1-631-559-9269 1-516-512-3133

 Email: info@creative-biomart.com  Fax: 1-631-938-8127

 45-1 Ramsey Road, Shirley, NY 11967, USA

SDS-PAGE



 Tel: 1-631-559-9269 1-516-512-3133

 Email: info@creative-biomart.com  Fax: 1-631-938-8127

 45-1 Ramsey Road, Shirley, NY 11967, USA