

Recombinant Human EIF4H Protein, Myc/DDK-tagged, C13 and N15-labeled

Cat. No. EIF4H-5267H **Lot. No.** (See product label)

SPECIFICATION

Product Overview	EIF4H MS Standard C13 and N15-labeled recombinant protein (NP_114381) with a C-terminal MYC/DDK tag, was expressed in HEK293 cells.
Species	Human
Source	HEK293
Description	This gene encodes one of the translation initiation factors, which functions to stimulate the initiation of protein synthesis at the level of mRNA utilization. This gene is deleted in Williams syndrome, a multisystem developmental disorder caused by the deletion of contiguous genes at 7q11.23. Alternative splicing of this gene generates 2 transcript variants.
Molecular Mass	25.2 kDa
AA Sequence	MADFDTYDDRAYSSFGGGRGSRGSAGGHGSRSQKELPTEPPYTAYVGNLPFNTV QGDIDAIFKDLIRSIVRLVRDKDTRKFKGFCYVEFDEVDSLKEALTYDGALLGDRSLR VDIAEGRKQDKGGFGFRKGGPDDRGFRDDFLGGRGGSRPGDRRTGPPMGSFRFD GPPLRGSNMDFREPTTEERAQRPRLLQLKPRTVATPLNQVANPNSAIFGGARPREEV VQKEQETRTRPLEQKLISEEDLAANDILDYKDDDDKV
Purity	> 80% as determined by SDS-PAGE and Coomassie blue staining
Stability	Stable for 3 months from receipt of products under proper storage and handling

 Tel: 1-631-559-9269 1-516-512-3133

 Email: info@creative-biomart.com  Fax: 1-631-938-8127

 45-1 Ramsey Road, Shirley, NY 11967, USA

conditions.

Storage Store at -80 centigrade. Avoid repeated freeze-thaw cycles.

Concentration 50 µg/mL as determined by BCA

Storage Buffer 100 mM glycine, 25 mM Tris-HCl, pH 7.3.

GENE INFORMATION

Gene Name EIF4H eukaryotic translation initiation factor 4H [Homo sapiens (human)]

Official Symbol EIF4H

Synonyms EIF4H; eukaryotic translation initiation factor 4H; WBSCR1, Williams Beuren syndrome chromosome region 1; KIAA0038; WSCR1; Williams-Beuren syndrome chromosome region 1; WBSCR1; eIF-4H;

Gene ID 7458

mRNA Refseq NM_031992

Protein Refseq NP_114381

MIM 603431

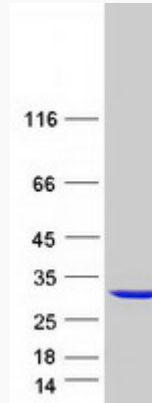
UniProt ID Q15056

 Tel: 1-631-559-9269 1-516-512-3133

 Email: info@creative-biomart.com  Fax: 1-631-938-8127

 45-1 Ramsey Road, Shirley, NY 11967, USA

SDS-PAGE



 Tel: 1-631-559-9269 1-516-512-3133

 Email: info@creative-biomart.com  Fax: 1-631-938-8127

 45-1 Ramsey Road, Shirley, NY 11967, USA