

Recombinant Human EIF5 Protein, Myc/DDK-tagged, C13 and N15-labeled

Cat. No. EIF5-3395H **Lot. No.** (See product label)

SPECIFICATION

Product Overview

EIF5 MS Standard C13 and N15-labeled recombinant protein (NP_001960) with a C-terminal MYC/DDK tag, was expressed in HEK293 cells.

Species

Human

Source

HEK293

Description

Eukaryotic translation initiation factor-5 (EIF5) interacts with the 40S initiation complex to promote hydrolysis of bound GTP with concomitant joining of the 60S ribosomal subunit to the 40S initiation complex. The resulting functional 80S ribosomal initiation complex is then active in peptidyl transfer and chain elongations.

Molecular Mass

49.2 kDa

AA Sequence

```
MSVNVNRSVSDQFYRYKMPRLIAKVEGKNGIKTVIVNMVDVAKALNRPPPTYPTKYF
GCELGAQTQFDVKNDRYIVNGSHEANKLQDMLDGFIKKFVLCPECENPETDLHVNP
KKQTIGNSCKACGYRGM LDTHHKLCTFILKNPPENSDSGTGKKEKEKKNRKGKDKE
NGSVSSSETPPPPPPNEINPPPHTMEEEEDDDWGEDTTEEAQRRRMDEISDHAK
VLTLSDDLERTIEERVNILFDVFKKKKEEGVIDSSDKEIVAEERLDVKAMGPLVLTEV
LFNEKIREQIKKYRRHFLRFCHNNKAKRYLLHGLECVVAMHQAQLISKIPHILKEMY
DADLLEEEV IISWSEKASKKYVSKELAKEIRVKAEPFIKWLKEAEEESSGGEEDEDE
NIEVVYSKAASVPKIVETVKS DNKDD DIDIDAITRTRPLEQKLISEEDLAANDILDYKDD
DDKV
```

 Tel: 1-631-559-9269 1-516-512-3133

 Email: info@creative-biomart.com  Fax: 1-631-938-8127

 45-1 Ramsey Road, Shirley, NY 11967, USA

Purity	> 80% as determined by SDS-PAGE and Coomassie blue staining
Stability	Stable for 3 months from receipt of products under proper storage and handling conditions.
Storage	Store at -80 centigrade. Avoid repeated freeze-thaw cycles.
Concentration	50 µg/mL as determined by BCA
Storage Buffer	100 mM glycine, 25 mM Tris-HCl, pH 7.3.

GENE INFORMATION

Gene Name	EIF5 eukaryotic translation initiation factor 5 [Homo sapiens (human)]
Official Symbol	EIF5
Synonyms	EIF5; eukaryotic translation initiation factor 5; eIF-5; EIF-5A;
Gene ID	1983
mRNA Refseq	NM_001969
Protein Refseq	NP_001960
MIM	601710
UniProt ID	P55010

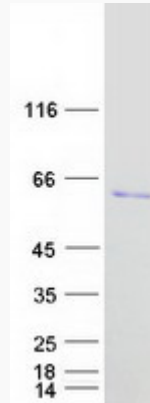
 Tel: 1-631-559-9269 1-516-512-3133

 Email: info@creative-biomart.com  Fax: 1-631-938-8127

 45-1 Ramsey Road, Shirley, NY 11967, USA



SDS-PAGE



Tel: 1-631-559-9269 1-516-512-3133

Email: info@creative-biomart.com Fax: 1-631-938-8127

45-1 Ramsey Road, Shirley, NY 11967, USA