

Recombinant Full Length Human EIF5A Protein, C-Flag-tagged

Cat. No. EIF5A-1946HFL Lot. No. (See product label)

SPECIFICATION

Product Overview	Recombinant Full Length Human EIF5A Protein, fused to Flag-tag at C-terminus, was expressed in Mammalian cells.
Species	Human
Source	Mammalian Cells
Description	Enables U6 snRNA binding activity and protein N-terminus binding activity. Involved in several processes, including cellular response to virus; positive regulation of intrinsic apoptotic signaling pathway by p53 class mediator; and tumor necrosis factor-mediated signaling pathway. Located in annulate lamellae; cytoplasm; and nucleus. Part of nuclear pore.
Form	25 mM Tris HCl, pH 7.3, 100 mM glycine, 10% glycerol.
Molecular Mass	16.7 kDa
AA Sequence	MADDLDFETGDAGASATFPMQCSALRKNGFVVLKGRPCKIVEMSTSKTGKHHGAK VHLVGIDIFTGKKYE DICPSTHNMDVPNIKRNDFQLIGIQDGYLSLLQDSGEVREDLR LPEGDLGKEIEQKYDCGEEILITVLSA MTEEA AVAIKAMAK TRTRPLEQKLISEEDLA ANDILDYKDDDDKV
Purity	> 80% as determined by SDS-PAGE and Coomassie blue staining.
Stability	Stable for 12 months from the date of receipt of the product under proper storage and

 Tel: 1-631-559-9269 1-516-512-3133

 Email: info@creative-biomart.com  Fax: 1-631-938-8127

 45-1 Ramsey Road, Shirley, NY 11967, USA

handling conditions. Avoid repeated freeze-thaw cycles.

Storage Store at -80 centigrade.

Concentration >50 ug/mL as determined by microplate BCA method.

Preparation Recombinant protein was captured through anti-DDK affinity column followed by conventional chromatography steps.

Full Length Full L.

GENE INFORMATION

Gene Name EIF5A eukaryotic translation initiation factor 5A [Homo sapiens (human)]

Official Symbol EIF5A

Synonyms FABAS; EIF-5A; EIF5A1; eIF-4D; eIF5AI

Gene ID 1984

mRNA Refseq NM_001143761.1

Protein Refseq NP_001137233.1

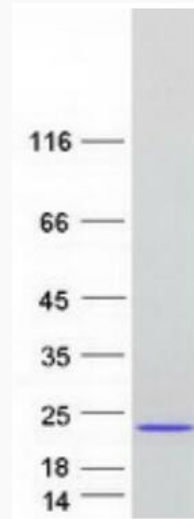
MIM 600187

UniProt ID P63241

 Tel: 1-631-559-9269 1-516-512-3133

 Email: info@creative-biomart.com  Fax: 1-631-938-8127

 45-1 Ramsey Road, Shirley, NY 11967, USA



Coomassie blue staining of purified EIF5A protein.

 Tel: 1-631-559-9269 1-516-512-3133

 Email: info@creative-biomart.com  Fax: 1-631-938-8127

 45-1 Ramsey Road, Shirley, NY 11967, USA