

Recombinant Human EIF5A Protein, Myc/DDK-tagged, C13 and N15-labeled

Cat. No. EIF5A-4870H **Lot. No.** (See product label)

SPECIFICATION

Product Overview	EIF5A MS Standard C13 and N15-labeled recombinant protein (NP_001137233) with a C-terminal MYC/DDK tag, was expressed in HEK293 cells.
Species	Human
Source	HEK293
Description	EIF5A (Eukaryotic Translation Initiation Factor 5A) is a Protein Coding gene. Diseases associated with EIF5A include Human Immunodeficiency Virus Type 1 and Retinitis Pigmentosa 14. Among its related pathways are eIF5A regulation in response to inhibition of the nuclear export system and Metabolism of proteins. Gene Ontology (GO) annotations related to this gene include protein N-terminus binding. An important paralog of this gene is EIF5AL1.
Molecular Mass	16.8 kDa
AA Sequence	MADDLDFETGDAGASATFPMQCSALRKNQFVVLKGRPCKIVEMSTSKTGKHHGAK VHLVGDIFTGKKYEDICPSTHNMDVPNIKRNDQFLIGIQDGYLSLLQDSGEVREDLRL PEGDLGKEIEQKYDCGEEILITVLSAMTEEA AVAIKAMAKTRTRPLEQKLISEEDLAAN DILDYKDDDDKV
Purity	> 80% as determined by SDS-PAGE and Coomassie blue staining
Stability	Stable for 3 months from receipt of products under proper storage and handling

 Tel: 1-631-559-9269 1-516-512-3133

 Email: info@creative-biomart.com  Fax: 1-631-938-8127

 45-1 Ramsey Road, Shirley, NY 11967, USA

conditions.

Storage Store at -80 centigrade. Avoid repeated freeze-thaw cycles.

Concentration 50 µg/mL as determined by BCA

Storage Buffer 100 mM glycine, 25 mM Tris-HCl, pH 7.3.

GENE INFORMATION

Gene Name [EIF5A eukaryotic translation initiation factor 5A \[Homo sapiens \(human\) \]](#)

Official Symbol [EIF5A](#)

Synonyms EIF5A; eukaryotic translation initiation factor 5A; eukaryotic translation initiation factor 5A-1; EIF 5A; EIF5A1; MGC99547; MGC104255; eIF-4D; eIF-5A1; eIF-5A-1; rev-binding factor; eukaryotic initiation factor 5A; EIF-5A; eIF5A1;

Gene ID [1984](#)

mRNA Refseq [NM_001143761](#)

Protein Refseq [NP_001137233](#)

MIM [600187](#)

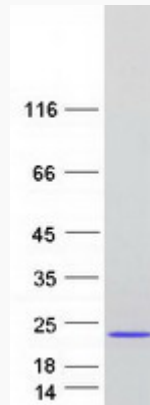
UniProt ID [P63241](#)

 Tel: 1-631-559-9269 1-516-512-3133

 Email: info@creative-biomart.com  Fax: 1-631-938-8127

 45-1 Ramsey Road, Shirley, NY 11967, USA

SDS-PAGE



 Tel: 1-631-559-9269 1-516-512-3133

 Email: info@creative-biomart.com  Fax: 1-631-938-8127

 45-1 Ramsey Road, Shirley, NY 11967, USA