

Recombinant Human EIF6 Protein, Flag tagged

Cat. No. EIF6-2911H **Lot. No.** (See product label)

SPECIFICATION

Product Overview Recombinant protein of human eukaryotic translation initiation factor 6 (EIF6), transcript variant 2

Species Human

Source HEK293T

Description Hemidesmosomes are structures which link the basal lamina to the intermediate filament cytoskeleton. An important functional component of hemidesmosomes is the integrin beta-4 subunit (ITGB4), a protein containing two fibronectin type III domains. The protein encoded by this gene binds to the fibronectin type III domains of ITGB4 and may help link ITGB4 to the intermediate filament cytoskeleton. The encoded protein, which is insoluble and found both in the nucleus and in the cytoplasm, can function as a translation initiation factor and prevent the association of the 40S and 60S ribosomal subunits. Multiple non-protein coding transcript variants and variants encoding two different isoforms have been found for this gene.

Molecular Mass 26.4 kDa

AA Sequence MAVRASFENNCEIGCFAKLTNTYCLVAIGGSENFYSVFEGELSDTIPVVHASIAGCRII
GRMCVGNRHGLLVPNNTTDQELQHIRNSLPDVTQIRRVEERLSALGNVTTTCNDYVA
LVHPDLDTRETEEILADV LKVEVFRQTVADQVLVGSYCVFSNQGGLVHPKTSIEDQDE
LSSLLQVPLVAGTVNRGSEVIAAGMVVNDWCAFCGLDTTSTELSVVESVFKLNEAQ
PSTIATSMRDSLIDSLTTRRLEQKLISEEDLAANDILDYKDDDDKV

 Tel: 1-631-559-9269 1-516-512-3133

 Email: info@creative-biomart.com  Fax: 1-631-938-8127

 45-1 Ramsey Road, Shirley, NY 11967, USA

Purity	> 80% as determined by SDS-PAGE and Coomassie blue staining
Notes	For testing in cell culture applications, please filter before use. Note that you may experience some loss of protein during the filtration process.
Stability	Stable for 12 months from the date of receipt of the product under proper storage and handling conditions. Avoid repeated freeze-thaw cycles.
Storage	Store at -80 centigrade.
Storage Buffer	25 mM Tris-HCl, 100 mM glycine, pH 7.3, 10% glycerol
Concentration	> 0.05 µg/µL as determined by microplate BCA method
Shipping	Dry Ice

GENE INFORMATION

Gene Name	EIF6 eukaryotic translation initiation factor 6 [Homo sapiens (human)]
Official Symbol	EIF6
Synonyms	EIF6; eukaryotic translation initiation factor 6; EIF3A, integrin beta 4 binding protein , ITGB4BP; b(2)gcn; p27BBP; B4 integrin interactor; p27 beta-4 integrin-binding protein; eukaryotic translation initiation factor 3A; CAB; EIF3A; eIF-6; ITGB4BP; p27(BBP)
Gene ID	3692
mRNA Refseq	NM_181468

 Tel: 1-631-559-9269 1-516-512-3133

 Email: info@creative-biomart.com  Fax: 1-631-938-8127

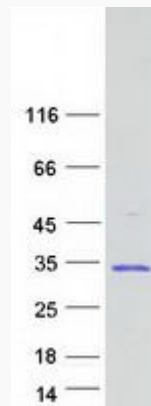
 45-1 Ramsey Road, Shirley, NY 11967, USA

Protein Refseq NP_852133

MIM 602912

UniProt ID P56537

SDS-PAGE



 Tel: 1-631-559-9269 1-516-512-3133

 Email: info@creative-biomart.com  Fax: 1-631-938-8127

 45-1 Ramsey Road, Shirley, NY 11967, USA