

## Recombinant Human ELAC2 Protein, GST-tagged

Cat. No. ELAC2-3229H Lot. No. (See product label)

### SPECIFICATION

<b>Product Overview</b>	Human ELAC2 full-length ORF ( NP_060597.3, 1 a.a. - 826 a.a.) recombinant protein with GST-tag at N-terminal.
<b>Species</b>	Human
<b>Source</b>	Wheat Germ
<b>Description</b>	The protein encoded by this gene has a C-terminal domain with tRNA 3' processing endoribonuclease activity, which catalyzes the removal of the 3' trailer from precursor tRNAs. The protein also interacts with activated Smad family member 2 (Smad2) and its nuclear partner forkhead box H1 (also known as FAST-1), and reduced expression can suppress transforming growth factor-beta induced growth arrest. Mutations in this gene result in an increased risk of prostate cancer. Multiple transcript variants encoding different isoforms have been found for this gene. [provided by RefSeq, Sep 2009]
<b>Molecular Mass</b>	118.6 kDa
<b>AA Sequence</b>	MWALCSLLRSAAGRTMSQGRTISQAPARRERPRKDPLRHLRTREKRGPSGCSGGP NTVYLQVVAAGSRDSCGAALYVFSEFNRYLFNCGEGVQRLMQEHKLVARLDNIFLT RMHWSNVGGLSGMILTLKETGLPKCVLSGPPQLEKYLEAIKIFSGPLKGIELAVRPHS APEYEDETMVYQIPIHSEQRRGKHQPWQSPERPLSRLSPERSSDSELNENEPHLP HGVSQRRGVRDSSLVVAFICKLHLKRGNFLVLKAKEMGLPVGTAIIPIIAAVKDGKS ITHEGREILAEELCTPPDPGAAFVVVECPDESFIQPICENATFQRYQGKADAPVALVV

 Tel: 1-631-559-9269 1-516-512-3133

 Email: [info@creative-biomart.com](mailto:info@creative-biomart.com)  Fax: 1-631-938-8127

 45-1 Ramsey Road, Shirley, NY 11967, USA



HMAPASVLVDSRYQQWMERFGPDTQHLVLNENCASVHNLRSFKIQTQLNLIHPDIF  
 PLLTSFRCKKEGPTLSVPMVQGECLLKYQLRPRREWQRDAITCNPEEFIVEALQLP  
 NFQQSVQEYRRSAQDGPAPAEKRSQYPEIIFLGTGSAIPMKIRNVSATLVNISPDTSL  
 LLDCGEGTFGQLCRHYGDQVDRVLGTLAAVFSVSHLHADHHTGLPSILLQRERALASL  
 GKPLHPLLVVAPNQLKAWLQQYHNQCQEVLLHHISMIPAKCLQEGAEISSPAVERLIS  
 SLLRTCDLEEFQTCLVRHCKHAFGCALVHTSGWKVVYSGDTMPCEALVRMGKDAT  
 LLIHEATLEDGLEEEAVEKTHSTTSQAISVGMRMNAEFIMLNHFSQRYAKVPLFSPNF  
 SEKVGVAFDHMKVCFGDFPTMPKLIPPLKALFAGDIEEMEERREKRELQRVRAALLS  
 RELAGGLEDGEPQQKRAHTEEPQAKKVRAQ

**Applications**  
 Enzyme-linked Immunoabsorbent Assay  
 Western Blot (Recombinant protein)  
 Antibody Production  
 Protein Array

**Notes** Best use within three months from the date of receipt of this protein.

**Storage** Store at -80 centigrade. Aliquot to avoid repeated freezing and thawing.

**Storage Buffer** 50 mM Tris-HCl, 10 mM reduced Glutathione, pH=8.0 in the elution buffer.

## GENE INFORMATION

**Gene Name** ELAC2 *elaC* homolog 2 (E. coli) [ Homo sapiens ]

**Official Symbol** ELAC2

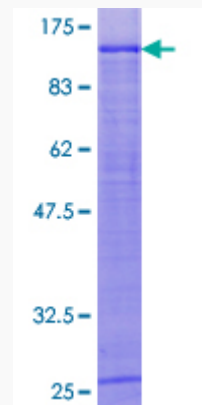
**Synonyms** ELAC2; *elaC* homolog 2 (E. coli); *elaC* (E. coli) homolog 2; zinc phosphodiesterase ELAC protein 2; FLJ10530; HPC2; tRNase Z (long form); RNase Z 2; tRNase Z 2; ribonuclease Z 2; tRNA 3 endonuclease 2; *elaC* homolog protein 2; heredity prostate cancer protein 2; putative prostate cancer susceptibility protein HPC2/ELAC2; ELC2;

Tel: 1-631-559-9269 1-516-512-3133


Email: [info@creative-biomart.com](mailto:info@creative-biomart.com) Fax: 1-631-938-8127

45-1 Ramsey Road, Shirley, NY 11967, USA

FLJ36693; FLJ42848;

**Gene ID** 60528**mRNA Refseq** NM\_001165962**Protein Refseq** NP\_001159434**MIM** 605367**UniProt ID** Q9BQ52**Quality Control  
Testing**

12.5% SDS-PAGE Stained with Coomassie Blue.

 Tel: 1-631-559-9269 1-516-512-3133 Email: [info@creative-biomart.com](mailto:info@creative-biomart.com)  Fax: 1-631-938-8127 45-1 Ramsey Road, Shirley, NY 11967, USA