

Recombinant Human ELAC2 Protein, Myc/DDK-tagged, C13 and N15-labeled

Cat. No. ELAC2-6299H Lot. No. (See product label)

SPECIFICATION

Product Overview	ELAC2 MS Standard C13 and N15-labeled recombinant protein (NP_060597) with a C-terminal MYC/DDK tag, was expressed in HEK293 cells.
Species	Human
Source	HEK293
Description	The protein encoded by this gene has a C-terminal domain with tRNA 3' processing endoribonuclease activity, which catalyzes the removal of the 3' trailer from precursor tRNAs. The protein also interacts with activated Smad family member 2 (Smad2) and its nuclear partner forkhead box H1 (also known as FAST-1), and reduced expression can suppress transforming growth factor-beta induced growth arrest. Mutations in this gene result in an increased risk of prostate cancer. Multiple transcript variants encoding different isoforms have been found for this gene.
Molecular Mass	92.2 kDa
AA Sequence	MWALCSLLRSAAGRTMSQGRTISQAPARRERPRKDPLRHLRTREKRGPSGCSGGP NTVYLQVVAAGSRDSGAALYVFSEFNRYLFNCGEGVQRLMQEHKLVARLDNIFLT RMHWSNVGGLSGMILTLKETGLPKCVLSGPPQLEKYLEAIKIFSGPLKGIELAVRPHS APEYEDETMTVYQIPIHSEQRRGKHQPWQSPERPLSRLSPERSSDSELNENEPHLP HGVSQRRGVDRDSSLVVAFICKLHLKRGNFLVLKAKEMGLPVGTAIIPIIAAVKDGKS

 Tel: 1-631-559-9269 1-516-512-3133

 Email: info@creative-biomart.com  Fax: 1-631-938-8127

 45-1 Ramsey Road, Shirley, NY 11967, USA

ITHEGREILAEELCTPPDPGAAFVVVECPDESFIQPICENATFQRYQGKADAPVALVV
 HMAPASVLVDSRYQQWMERFGPDTQHLVLNENCASVHNLRSFKIQTQLNLIHPDIF
 PLLTSFRCKKEGPTLSVPMVQGECLLKYQLRPRREWQRDAITCNPEEFIVEALQLP
 NFQQSVQEYRRSAQDGPAPAERKSQYPEIIFLGTGSAIPMKIRNVSATLVNISPDTSL
 LLDCGEGTFGQLCRHYGDQVDRVLGTLAAVFSHLHADHHTGLPSILLQRERALASL
 GKPLHPLLVVAPNQLKAWLQQYHNQCQEVLLHHISMIPAKCLQEGAEISSPAVERLIS
 SLLRTCDLEEFQTCLVRHCKHAFGCALVHTSGWKVVYSGDTMPCEALVRMGKDAT
 LLIHEATLEDGLEEEAVEKTHSTTSQAISVGMRMNAEFIMLNHFSQRYAKVPLFSPNF
 SEKVGVAFDHMKVCFGDFPTMPKLIPPLKALFAGDIEEMEERREKRELQRVRAALLS
 RELAGGLEDEPQQKRAHTEEPQAKKVRAQTRTRPLEQKLISEEDLAANDILDYKDD
 DDKV

Purity > 80% as determined by SDS-PAGE and Coomassie blue staining

Stability Stable for 3 months from receipt of products under proper storage and handling conditions.

Storage Store at -80 centigrade. Avoid repeated freeze-thaw cycles.

Concentration 50 µg/mL as determined by BCA

Storage Buffer 100 mM glycine, 25 mM Tris-HCl, pH 7.3.

GENE INFORMATION

Gene Name ELAC2 *elaC* ribonuclease Z 2 [*Homo sapiens* (human)]

Official Symbol ELAC2

Synonyms ELAC2; *elaC* homolog 2 (*E. coli*); *elaC* (*E. coli*) homolog 2; zinc phosphodiesterase ELAC protein 2; FLJ10530; HPC2; tRNase Z (long form); RNase Z 2; tRNase Z 2;

 Tel: 1-631-559-9269 1-516-512-3133

 Email: info@creative-biomart.com  Fax: 1-631-938-8127

 45-1 Ramsey Road, Shirley, NY 11967, USA

ribonuclease Z 2; tRNA 3 endonuclease 2; elaC homolog protein 2; heredity prostate cancer protein 2; putative prostate cancer susceptibility protein HPC2/ELAC2; ELC2; FLJ36693; FLJ42848;

Gene ID [60528](#)

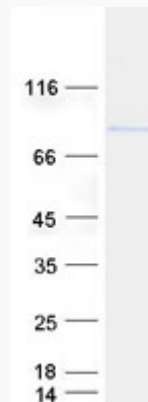
mRNA Refseq [NM_018127](#)

Protein Refseq [NP_060597](#)

MIM [605367](#)

UniProt ID [Q9BQ52](#)

SDS-PAGE



 Tel: 1-631-559-9269 1-516-512-3133

 Email: info@creative-biomart.com  Fax: 1-631-938-8127

 45-1 Ramsey Road, Shirley, NY 11967, USA