

Recombinant Full Length Human ELF1 Protein, N-His-tagged

Cat. No. ELF1-1348HFL Lot. No. (See product label)

SPECIFICATION

Product Overview	Recombinant Full Length Human ELF1 Protein, fused to His-tag at N-terminus, was expressed in E. coli.
Species	Human
Source	E.coli
Description	This gene encodes an E26 transformation-specific related transcription factor. The encoded protein is primarily expressed in lymphoid cells and acts as both an enhancer and a repressor to regulate transcription of various genes. Alternative splicing results in multiple transcript variants.
Form	25mM Tris, pH8.0, 150 mM NaCl, 10% glycerol, 1 % Sarkosyl.
Molecular Mass	67.3 kDa
AA Sequence	A DNA sequence encoding human full-length ELF1.
Purity	> 80% as determined by SDS-PAGE and Coomassie blue staining.
Stability	Stable for 12 months from the date of receipt of the product under proper storage and handling conditions. Avoid repeated freeze-thaw cycles.
Storage	Store at -80 centigrade.

 Tel: 1-631-559-9269 1-516-512-3133

 Email: info@creative-biomart.com  Fax: 1-631-938-8127

 45-1 Ramsey Road, Shirley, NY 11967, USA

Concentration	>50 ug/mL as determined by microplate BCA method.
Preparation	Recombinant protein was captured through anti-DDK affinity column followed by conventional chromatography steps.
Protein Families	Transcription Factors
Full Length	Full L.

GENE INFORMATION

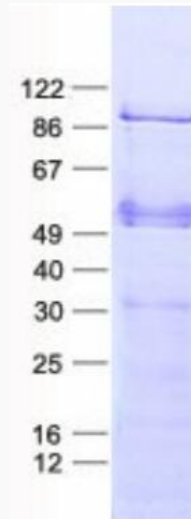
Gene Name	ELF1 E74 like ETS transcription factor 1 [Homo sapiens (human)]
Official Symbol	ELF1
Synonyms	RIA1; EFTUD1
Gene ID	1997
mRNA Refseq	NM_172373.4
Protein Refseq	NP_758961.1
MIM	189973
UniProt ID	P32519

 Tel: 1-631-559-9269 1-516-512-3133

 Email: info@creative-biomart.com  Fax: 1-631-938-8127

 45-1 Ramsey Road, Shirley, NY 11967, USA

SDS-PAGE



 Tel: 1-631-559-9269 1-516-512-3133

 Email: info@creative-biomart.com  Fax: 1-631-938-8127

 45-1 Ramsey Road, Shirley, NY 11967, USA