

Recombinant Human ELF1 Protein, GST-tagged

Cat. No. ELF1-3236H **Lot. No.** (See product label)

SPECIFICATION

Product Overview	Human ELF1 full-length ORF (NP_758961.1, 1 a.a. - 619 a.a.) recombinant protein with GST-tag at N-terminal.
Species	Human
Source	Wheat Germ
Description	This gene encodes an E26 transformation-specific related transcription factor. The encoded protein is primarily expressed in lymphoid cells and acts as both an enhancer and a repressor to regulate transcription of various genes. Alternative splicing results in multiple transcript variants. [provided by RefSeq, Feb 2009]
Molecular Mass	93.9 kDa
AA Sequence	<p>MAAVVQQNDLVFEFASNVMEDERQLGDPAIFPAVIVEHVPGADILNSYAGLACVEEP NDMITESSLDVAEEEEIIDDDDDITLTVEASCHDGDDETIEAEEALLNMDSPGPMLD EKRIINNIFSSPEDDMVVAPVTHVSVTLDGIPVEMETQQVQEKYADSPGASSPEQPK RKKGRKTKPPRPDSPATTPNISVKKKNKDGKGNITLWFLALLQDKATCPKYIKW TQREKGIFKLVDSKAVSRLWGKHKNKPDMMNYETMGRALRYYYQRGILAKVEGQRLV YQFKEMPKDLIYINDEDPSSSISSDPSLSSSATSNRNQTSRSRVSSSPGVKGGATT VLKPGNSKAAKPKDPVEVAQPSEVLRVQPTQSPYPTQLFRTVHVVPVQAVPEGE AARTSTMQDETLNSSVQSIRTIQAPTQVPVVVSPRNQQLHTVTLQTVPLTTVIASDTP SAGTGSQKFILQAIPSSQPMVLKENVMLQSQKAGSPPSIVLGPVQVQVLTNSVQT ICNGTVSVASSPSFSATAPVVTFSRSSLVAHPPGTVITSVIKTQETKTLTQEVEKK</p>

 Tel: 1-631-559-9269 1-516-512-3133

 Email: info@creative-biomart.com  Fax: 1-631-938-8127

 45-1 Ramsey Road, Shirley, NY 11967, USA

ESEDHLKENTEKTEQQPQPYVMVSSSNGFTSQVAMKQNELLEPNSF

Applications
 Enzyme-linked Immunoabsorbent Assay
 Western Blot (Recombinant protein)
 Antibody Production
 Protein Array

Notes Best use within three months from the date of receipt of this protein.

Storage Store at -80 centigrade. Aliquot to avoid repeated freezing and thawing.

Storage Buffer 50 mM Tris-HCl, 10 mM reduced Glutathione, pH=8.0 in the elution buffer.

GENE INFORMATION

Gene Name [ELF1 E74-like factor 1 \(ets domain transcription factor\) \[Homo sapiens \]](#)

Official Symbol [ELF1](#)

Synonyms ELF1; E74-like factor 1 (ets domain transcription factor); ETS-related transcription factor Elf-1;

Gene ID [1997](#)

mRNA Refseq [NM_001145353](#)

Protein Refseq [NP_001138825](#)

MIM [189973](#)

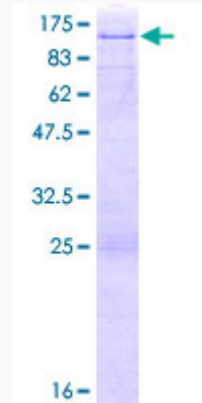
UniProt ID [P32519](#)

 Tel: 1-631-559-9269 1-516-512-3133

 Email: info@creative-biomart.com  Fax: 1-631-938-8127

 45-1 Ramsey Road, Shirley, NY 11967, USA

**Quality Control
Testing**



12.5% SDS-PAGE Stained with Coomassie Blue.

 Tel: 1-631-559-9269 1-516-512-3133

 Email: info@creative-biomart.com  Fax: 1-631-938-8127

 45-1 Ramsey Road, Shirley, NY 11967, USA